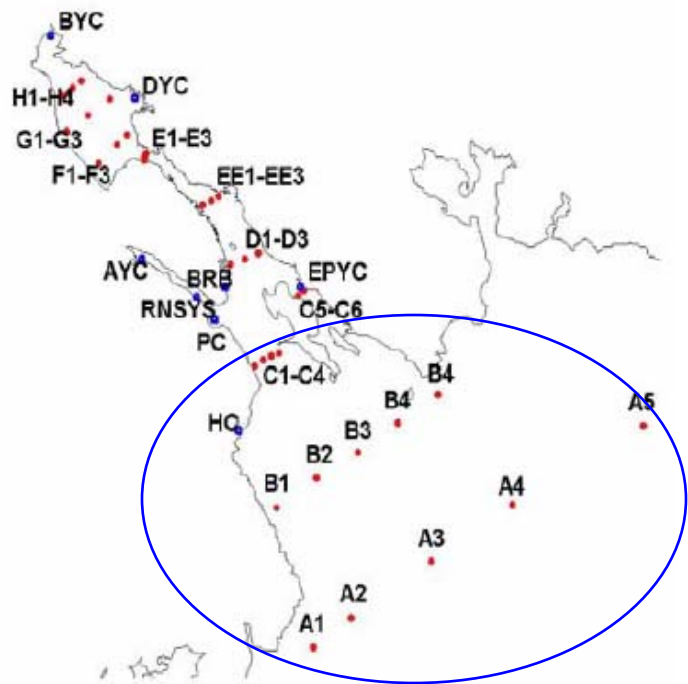


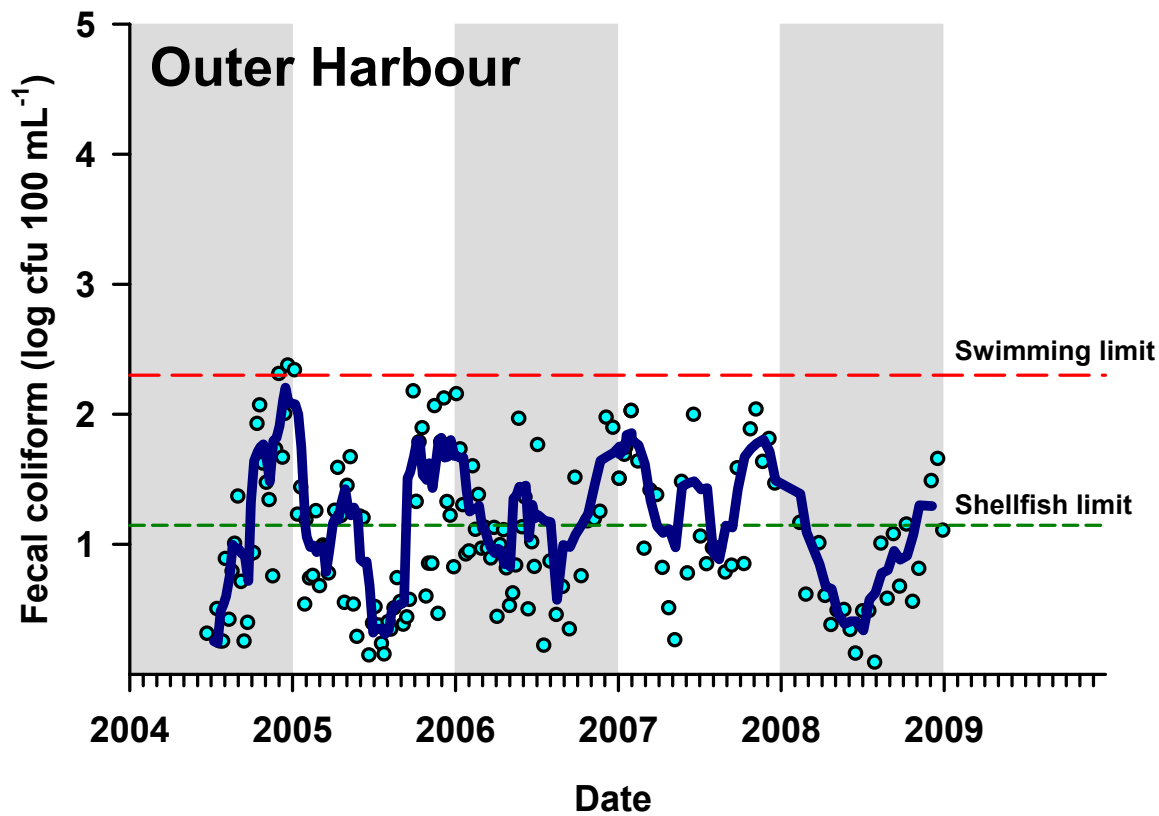
Halifax Harbour Water Quality Monitoring Program

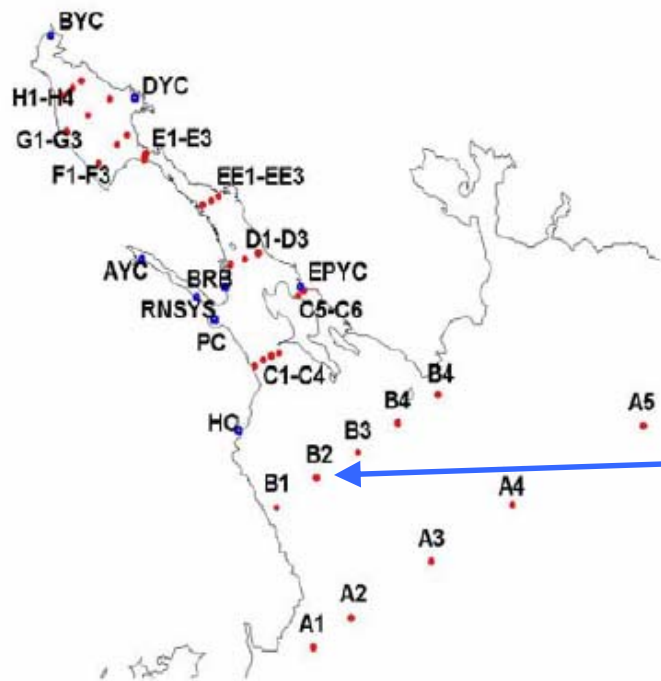
Fecal Coliforms

data source: *Halifax Harbour Water Quality Monitoring Program, Halifax Regional Municipality*
data consultants: *AMEC Earth and Environmental for Stantec*
data analysis: *Department of Fisheries and Oceans, Bedford Institute of Oceanography*

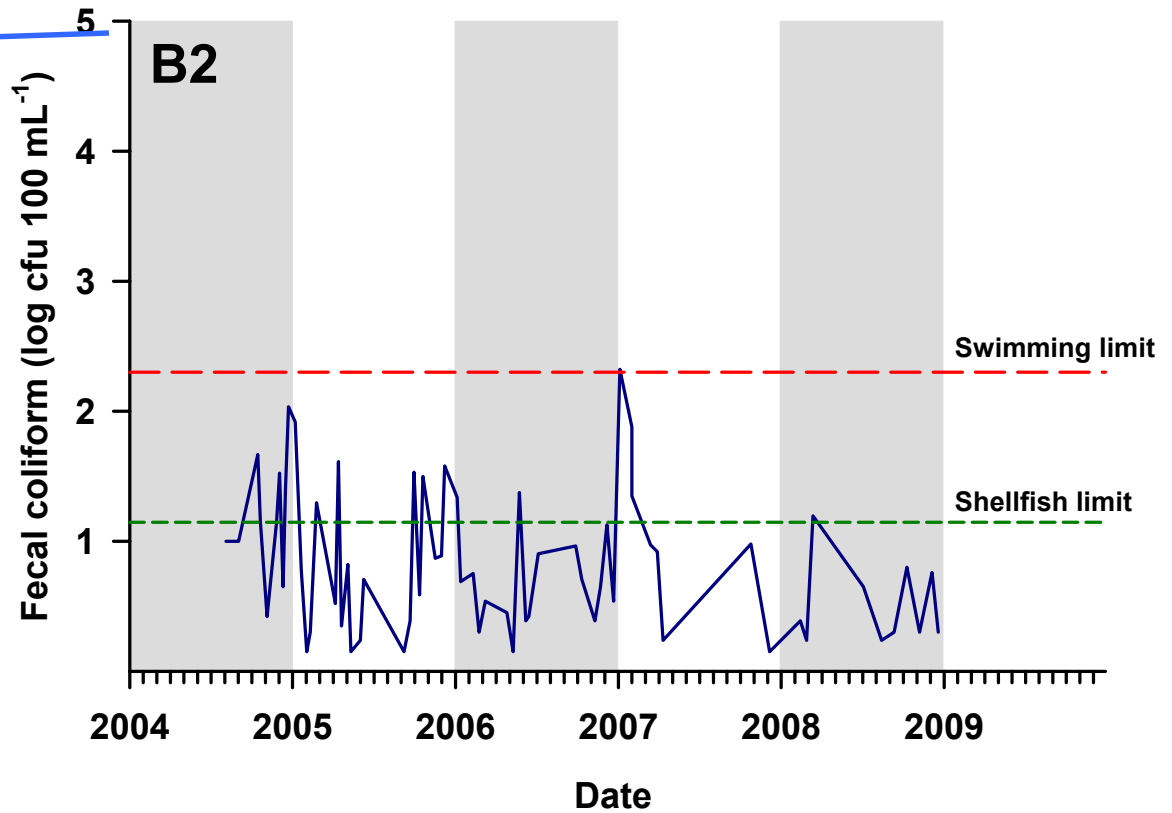


Outer Harbour : B2, HC, C2, C3

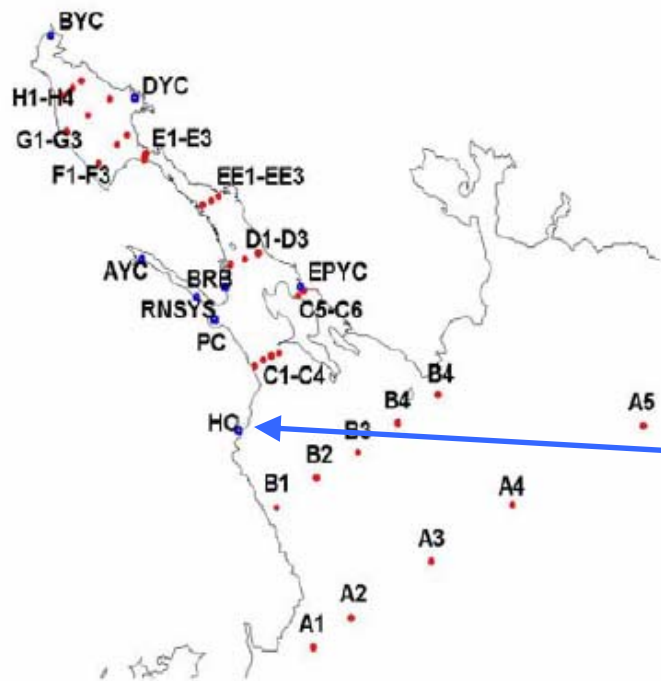




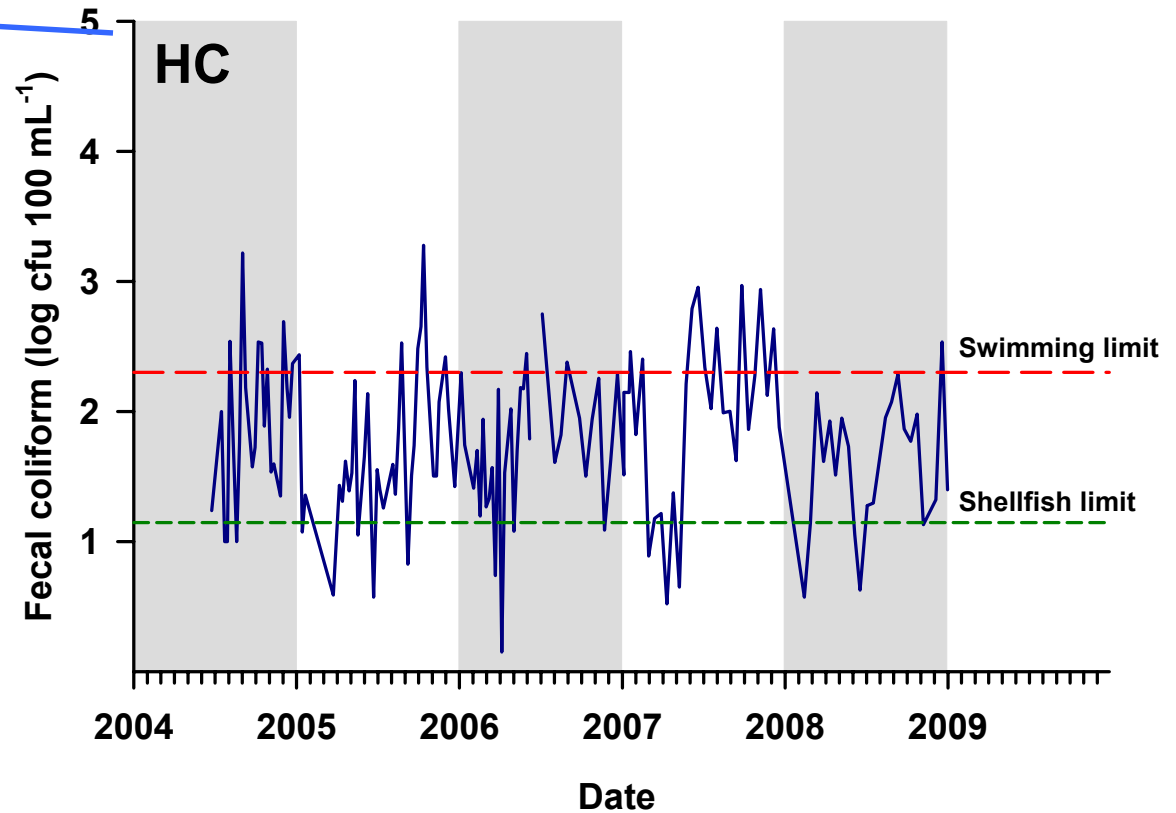
Outer Harbour : B2



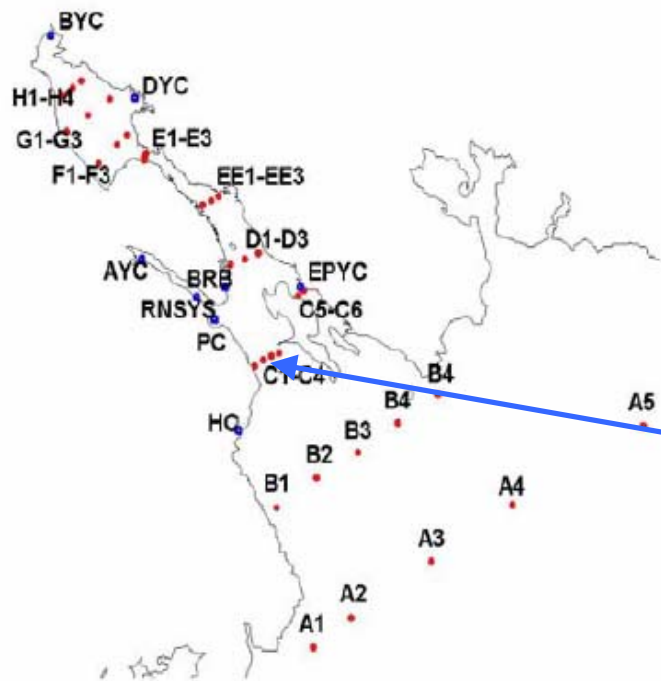
data source: *Halifax Harbour Water Quality Monitoring Program, Halifax Regional Municipality*
 data consultants: *AMEC Earth and Environmental for Stantec*
 data analysis: *Department of Fisheries and Oceans, Bedford Institute of Oceanography*



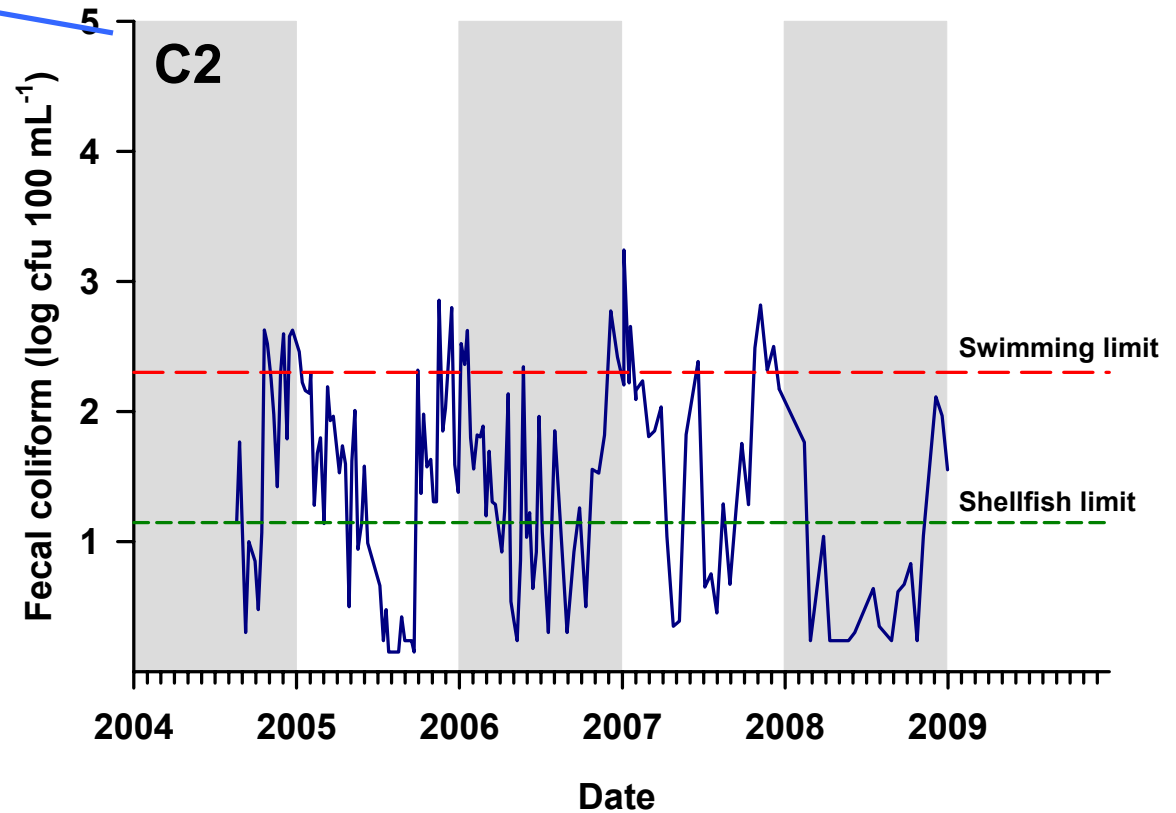
Outer Harbour : HC (Herring Cove)



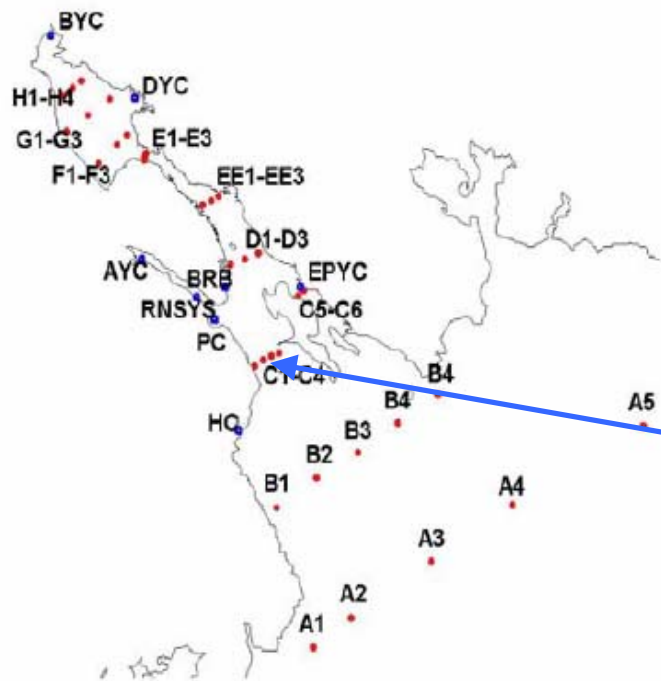
data source: *Halifax Harbour Water Quality Monitoring Program, Halifax Regional Municipality*
 data consultants: *AMEC Earth and Environmental for Stantec*
 data analysis: *Department of Fisheries and Oceans, Bedford Institute of Oceanography*



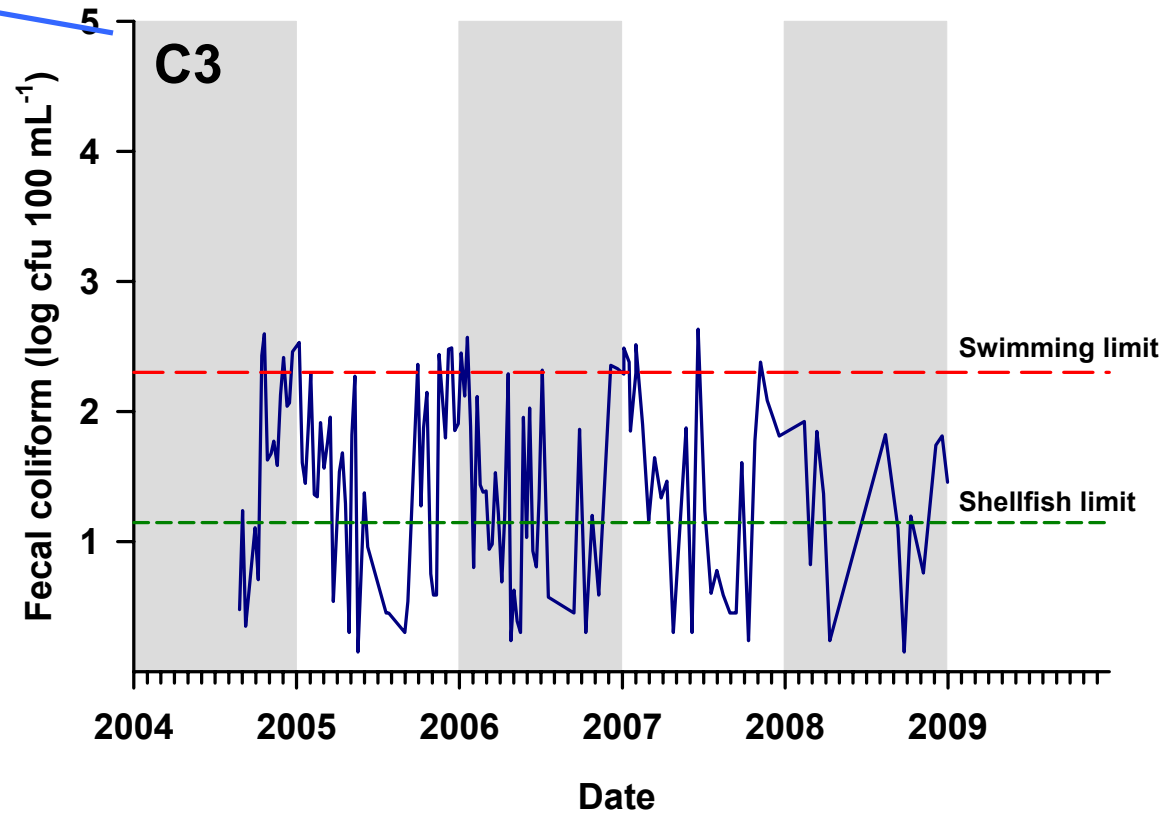
Outer Harbour : C2



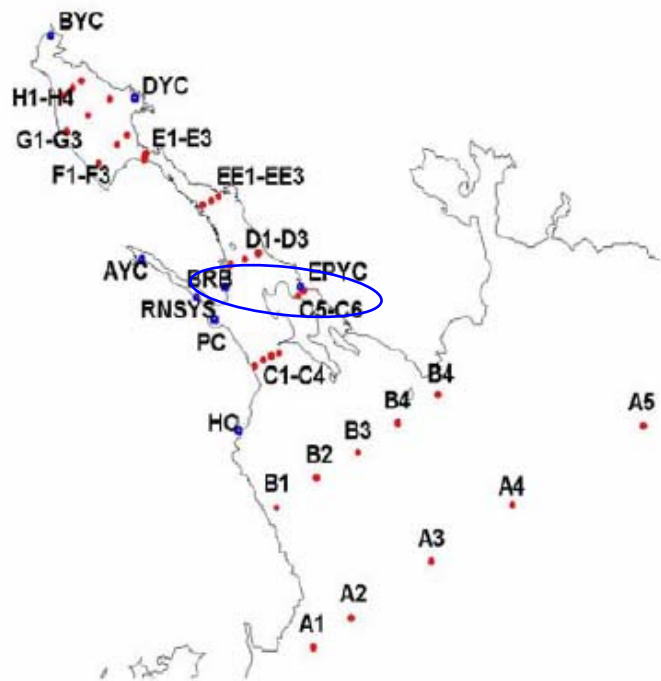
data source: *Halifax Harbour Water Quality Monitoring Program, Halifax Regional Municipality*
 data consultants: *AMEC Earth and Environmental for Stantec*
 data analysis: *Department of Fisheries and Oceans, Bedford Institute of Oceanography*



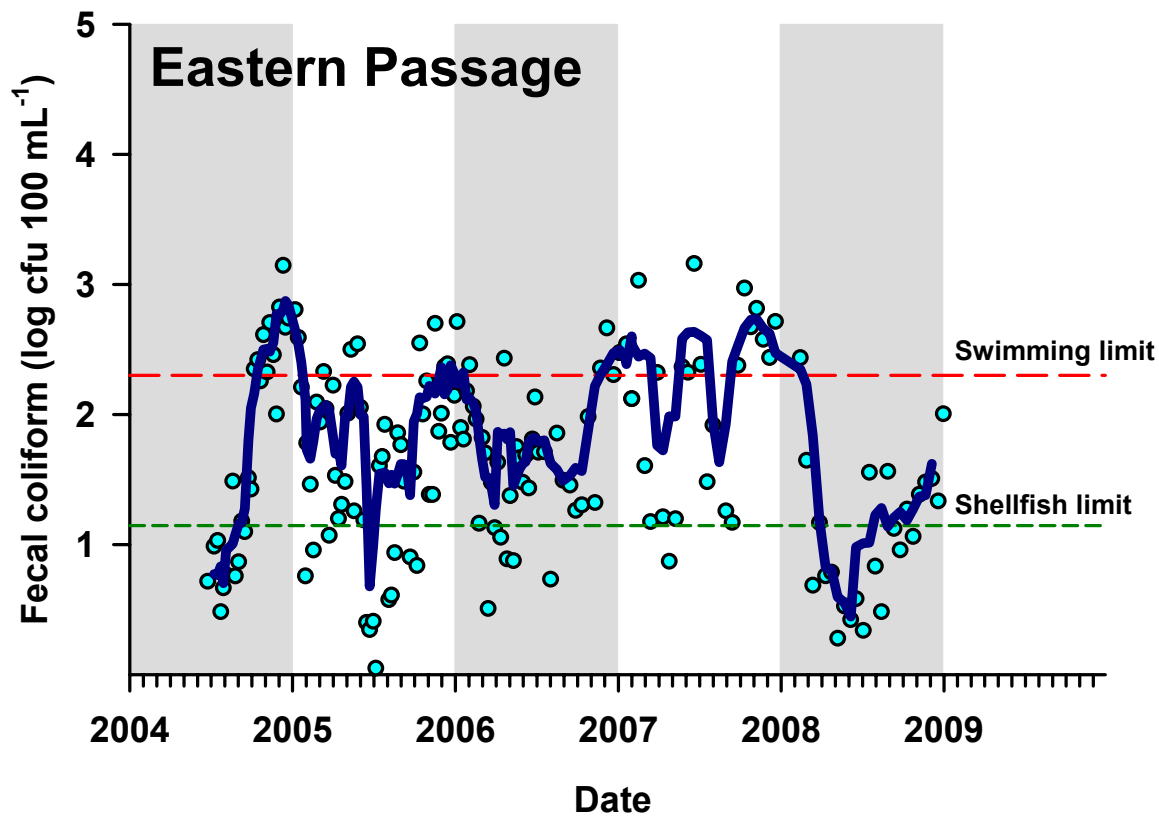
Outer Harbour : C3



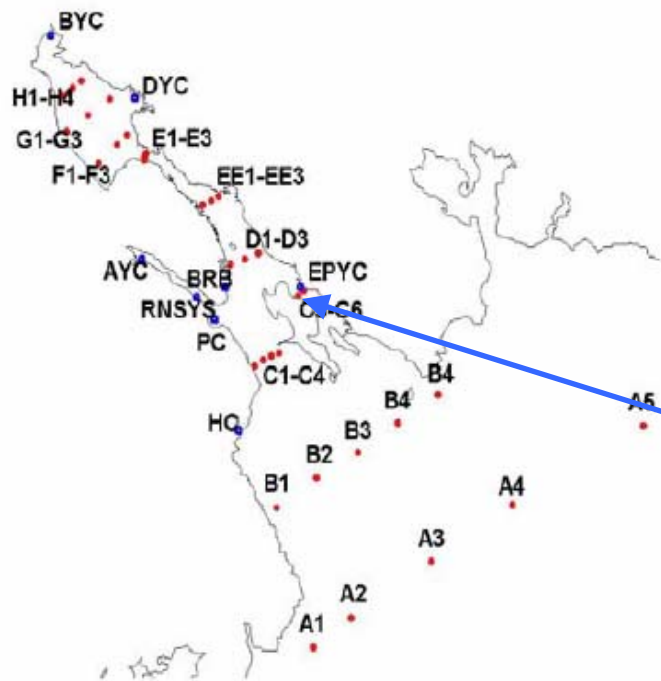
data source: *Halifax Harbour Water Quality Monitoring Program, Halifax Regional Municipality*
 data consultants: *AMEC Earth and Environmental for Stantec*
 data analysis: *Department of Fisheries and Oceans, Bedford Institute of Oceanography*



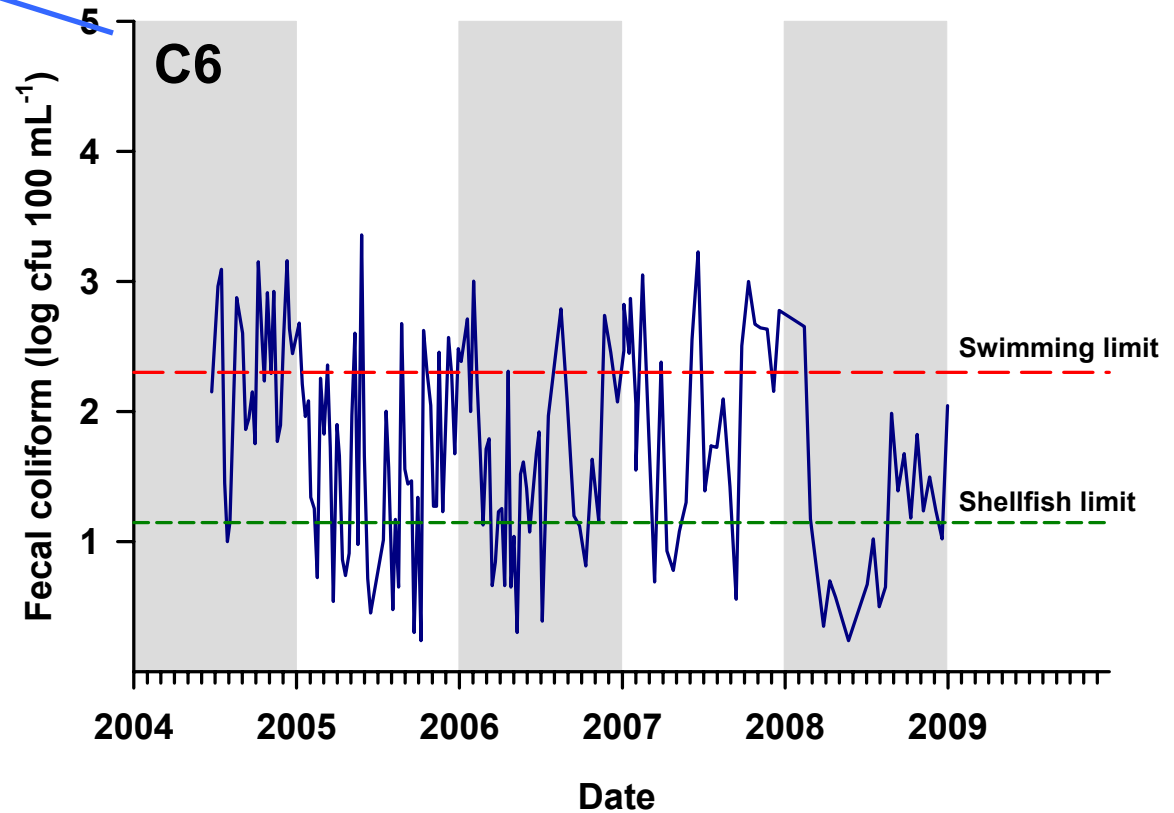
Eastern Passage : C6, SYC, BRB



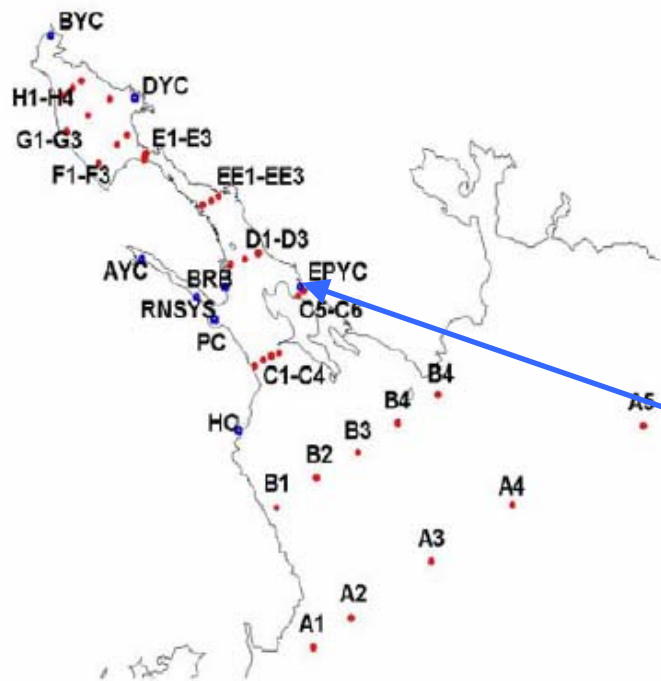
data source: *Halifax Harbour Water Quality Monitoring Program, Halifax Regional Municipality*
 data consultants: *AMEC Earth and Environmental for Stantec*
 data analysis: *Department of Fisheries and Oceans, Bedford Institute of Oceanography*



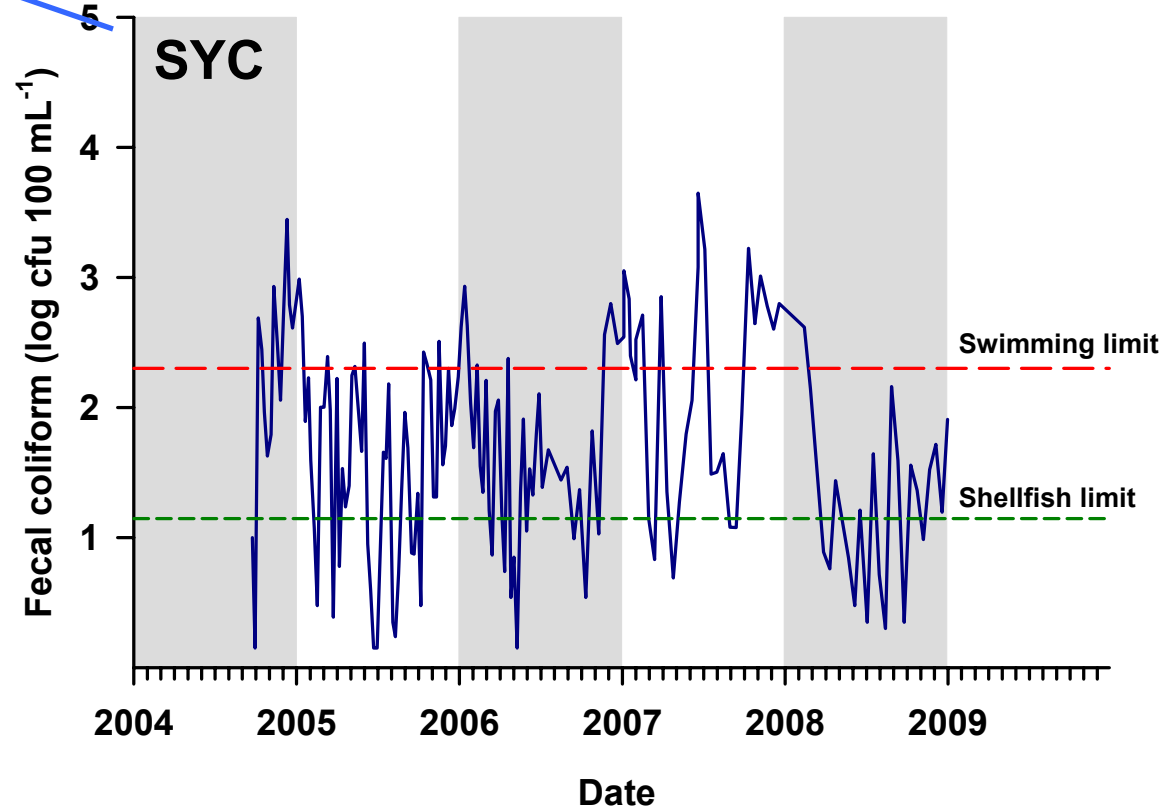
Eastern Passage : C6



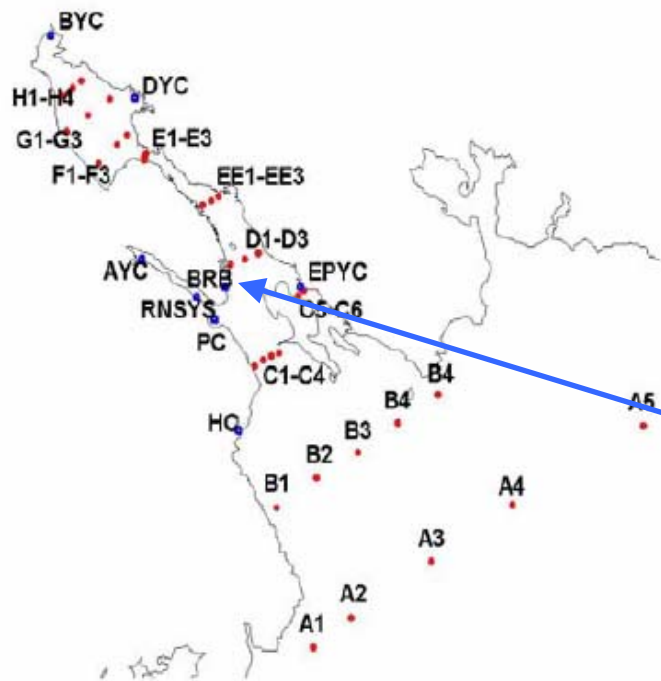
data source: *Halifax Harbour Water Quality Monitoring Program, Halifax Regional Municipality*
 data consultants: *AMEC Earth and Environmental for Stantec*
 data analysis: *Department of Fisheries and Oceans, Bedford Institute of Oceanography*



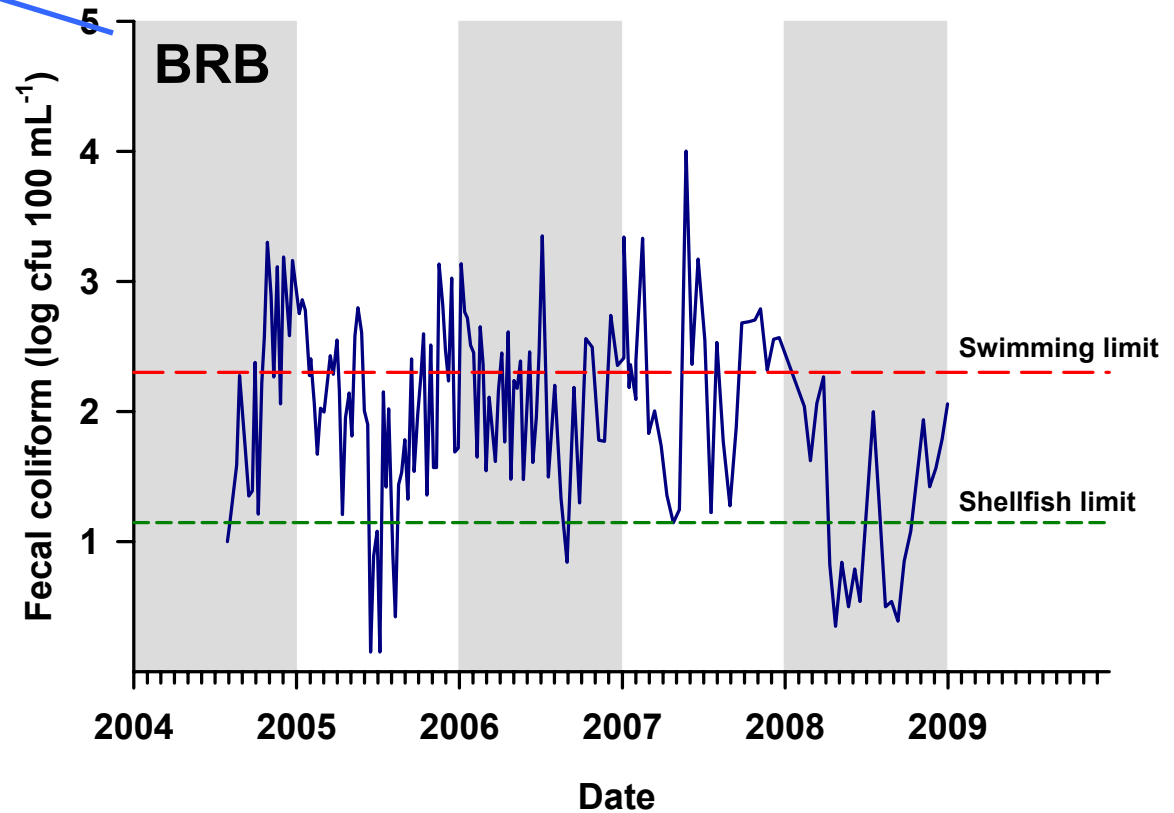
Eastern Passage : SYC (Shearwater Yacht Club)



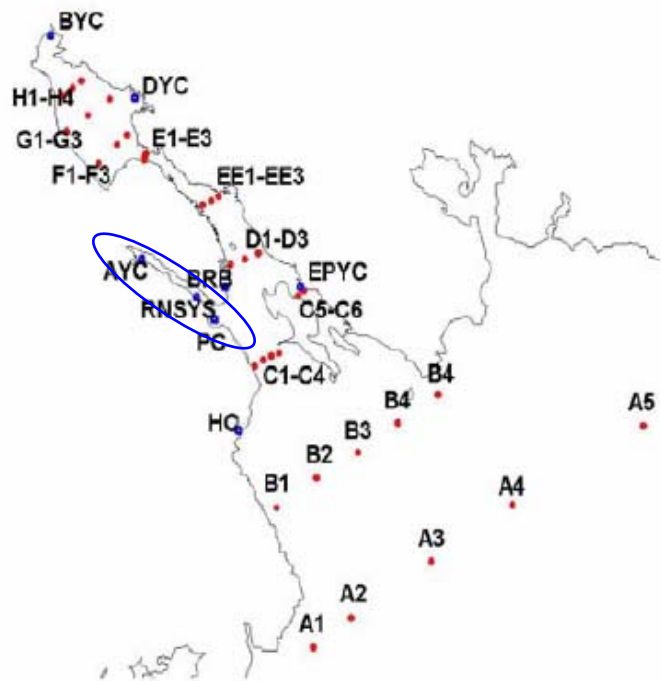
data source: *Halifax Harbour Water Quality Monitoring Program, Halifax Regional Municipality*
 data consultants: *AMEC Earth and Environmental for Stantec*
 data analysis: *Department of Fisheries and Oceans, Bedford Institute of Oceanography*



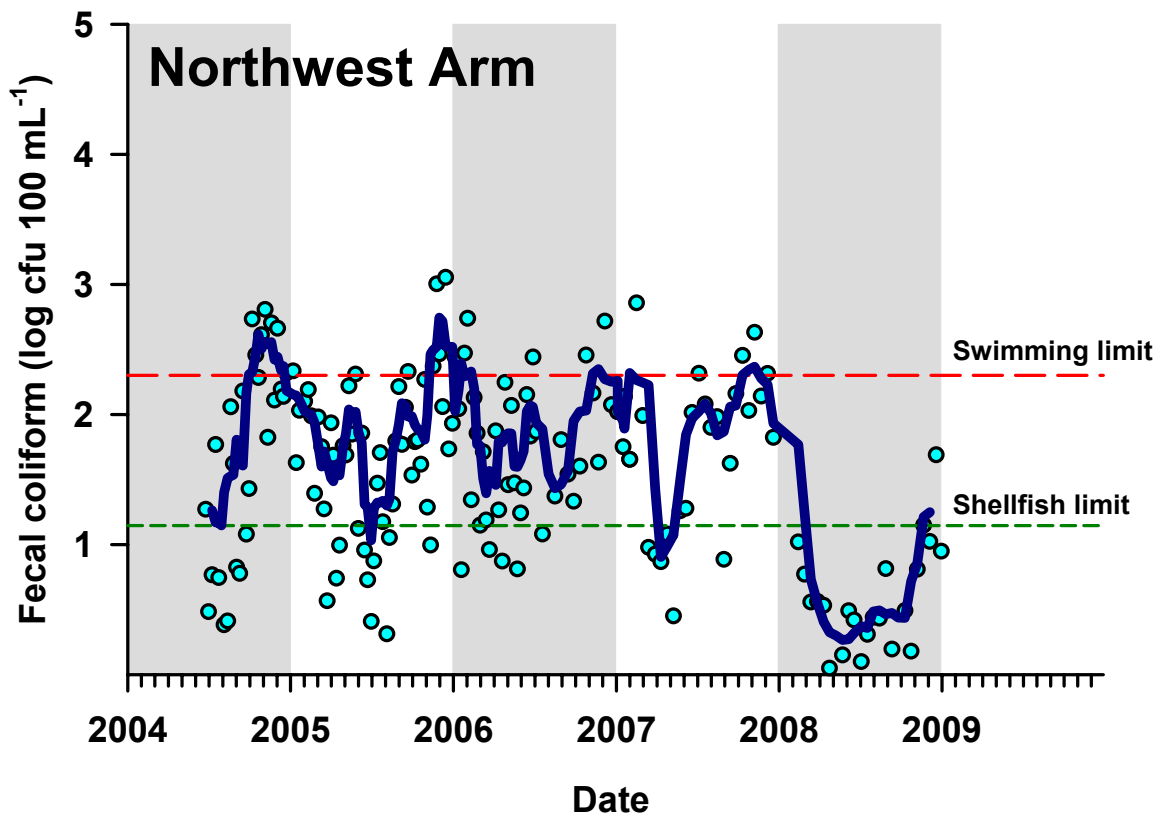
Eastern Passage : BRB (Black Rock Beach)



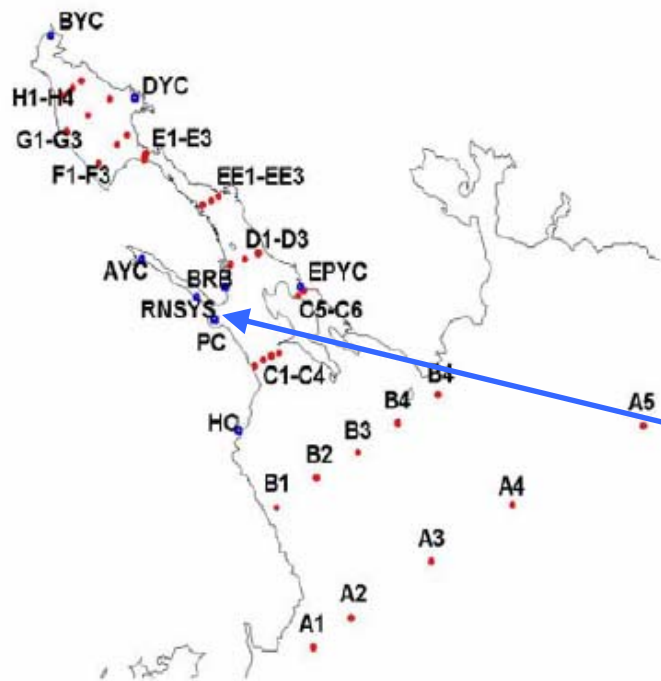
data source: *Halifax Harbour Water Quality Monitoring Program, Halifax Regional Municipality*
 data consultants: *AMEC Earth and Environmental for Stantec*
 data analysis: *Department of Fisheries and Oceans, Bedford Institute of Oceanography*



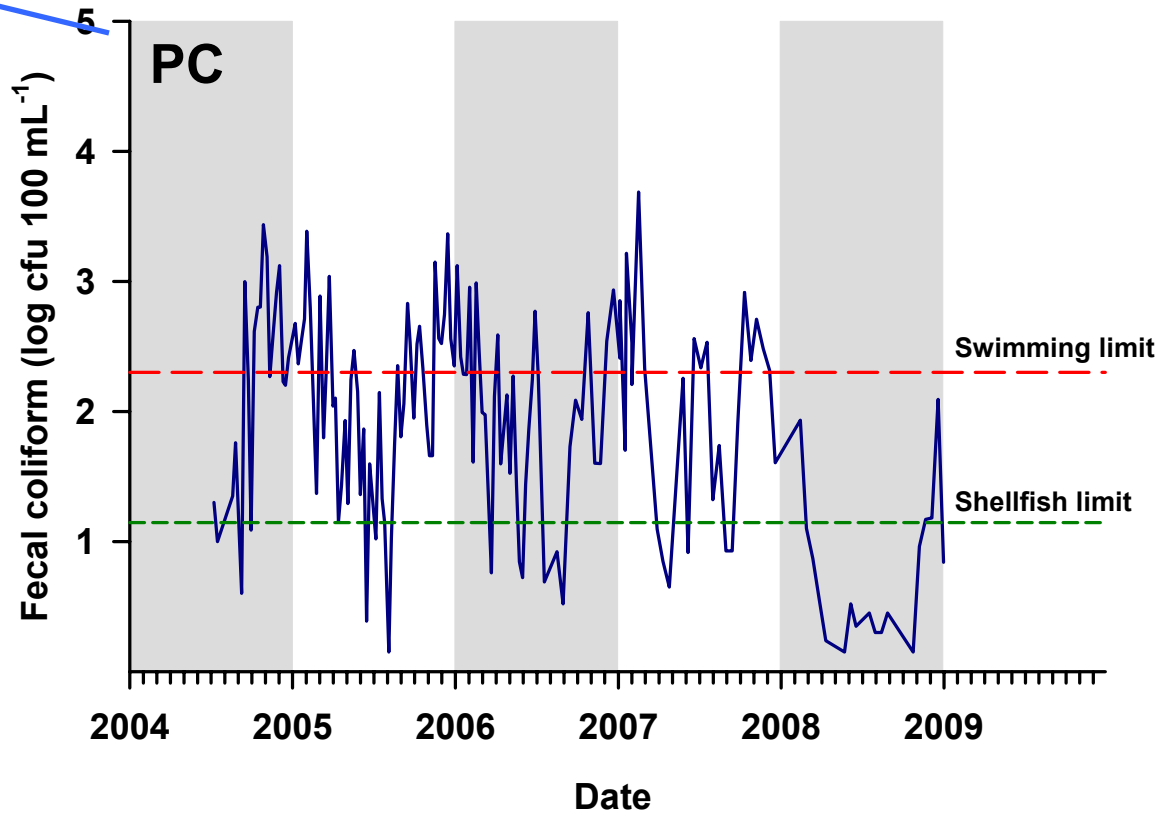
Northwest Arm : PC, RNSYS, AYC



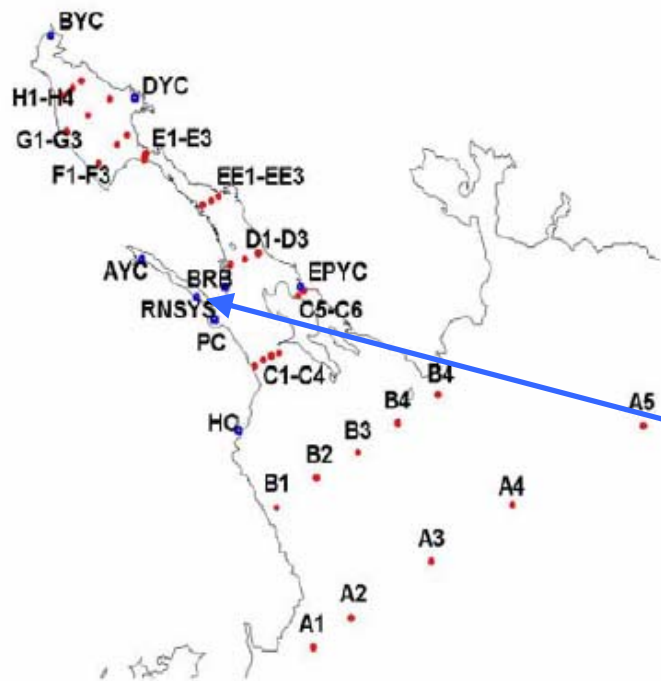
data source: *Halifax Harbour Water Quality Monitoring Program, Halifax Regional Municipality*
 data consultants: *AMEC Earth and Environmental for Stantec*
 data analysis: *Department of Fisheries and Oceans, Bedford Institute of Oceanography*



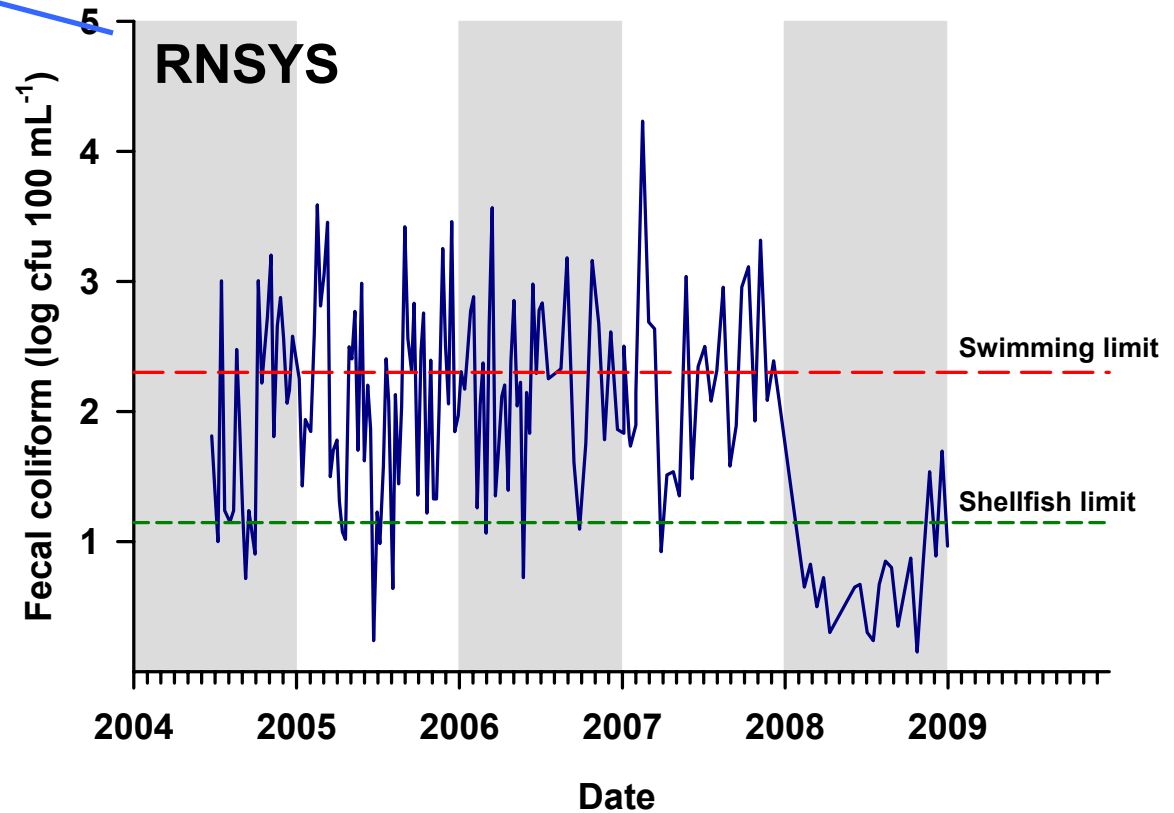
Northwest Arm : PC (Purcells Cove)



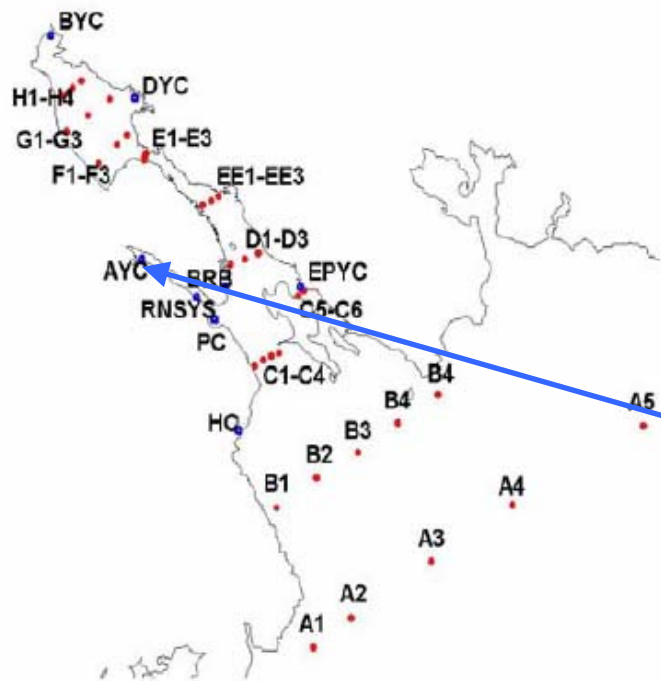
data source: *Halifax Harbour Water Quality Monitoring Program, Halifax Regional Municipality*
 data consultants: *AMEC Earth and Environmental for Stantec*
 data analysis: *Department of Fisheries and Oceans, Bedford Institute of Oceanography*



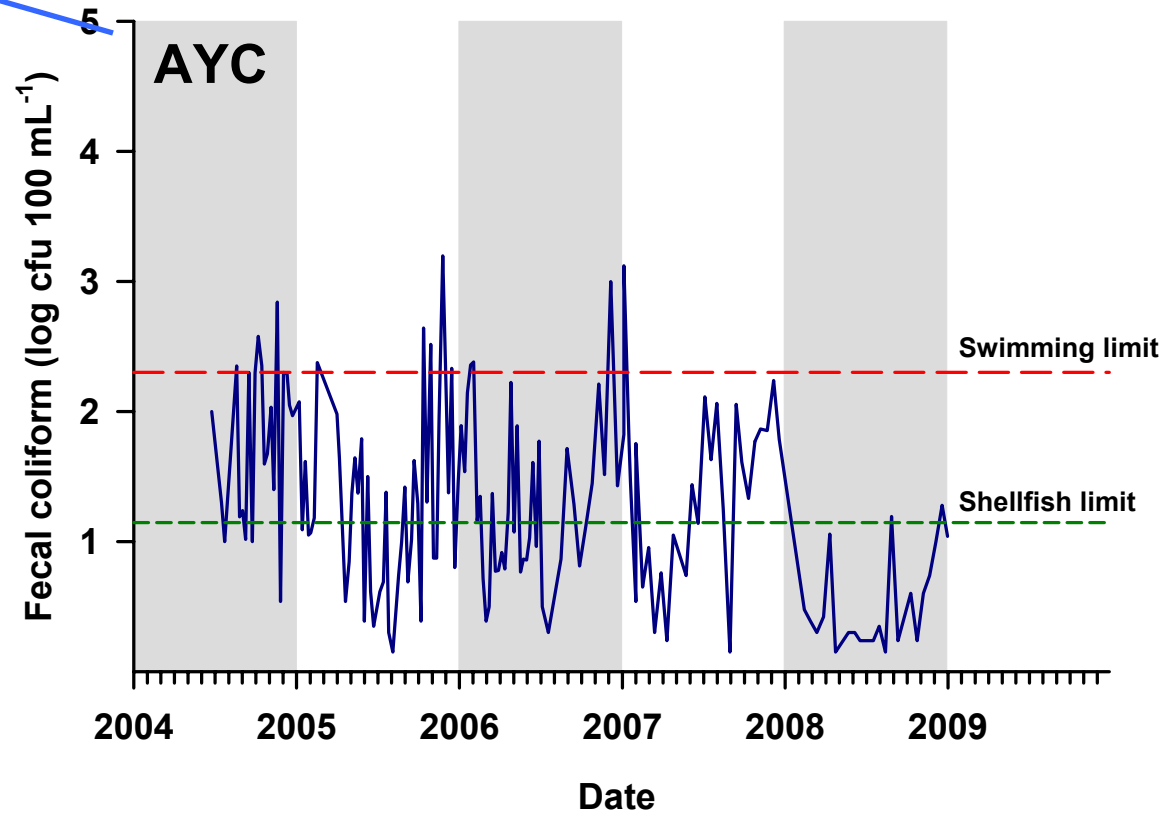
Northwest Arm : RNSYS (Royal NS Yacht Sqd)



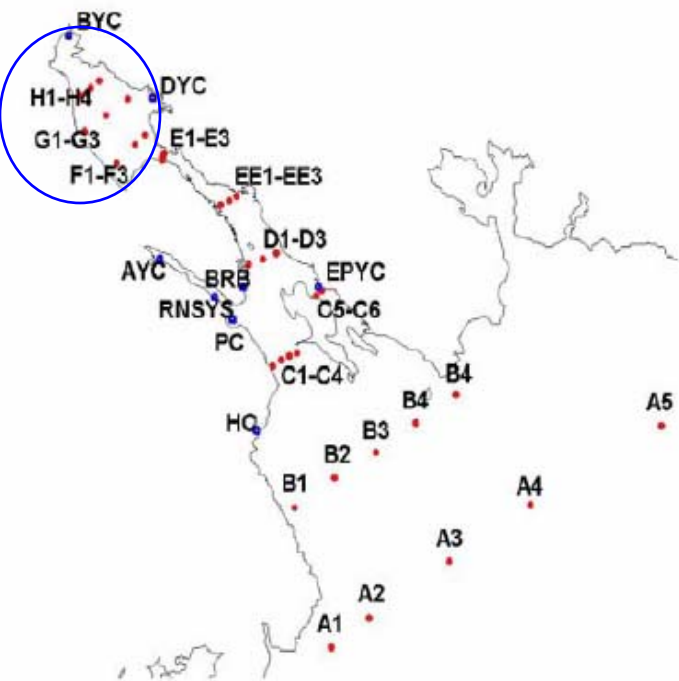
data source: *Halifax Harbour Water Quality Monitoring Program, Halifax Regional Municipality*
 data consultants: *AMEC Earth and Environmental for Stantec*
 data analysis: *Department of Fisheries and Oceans, Bedford Institute of Oceanography*



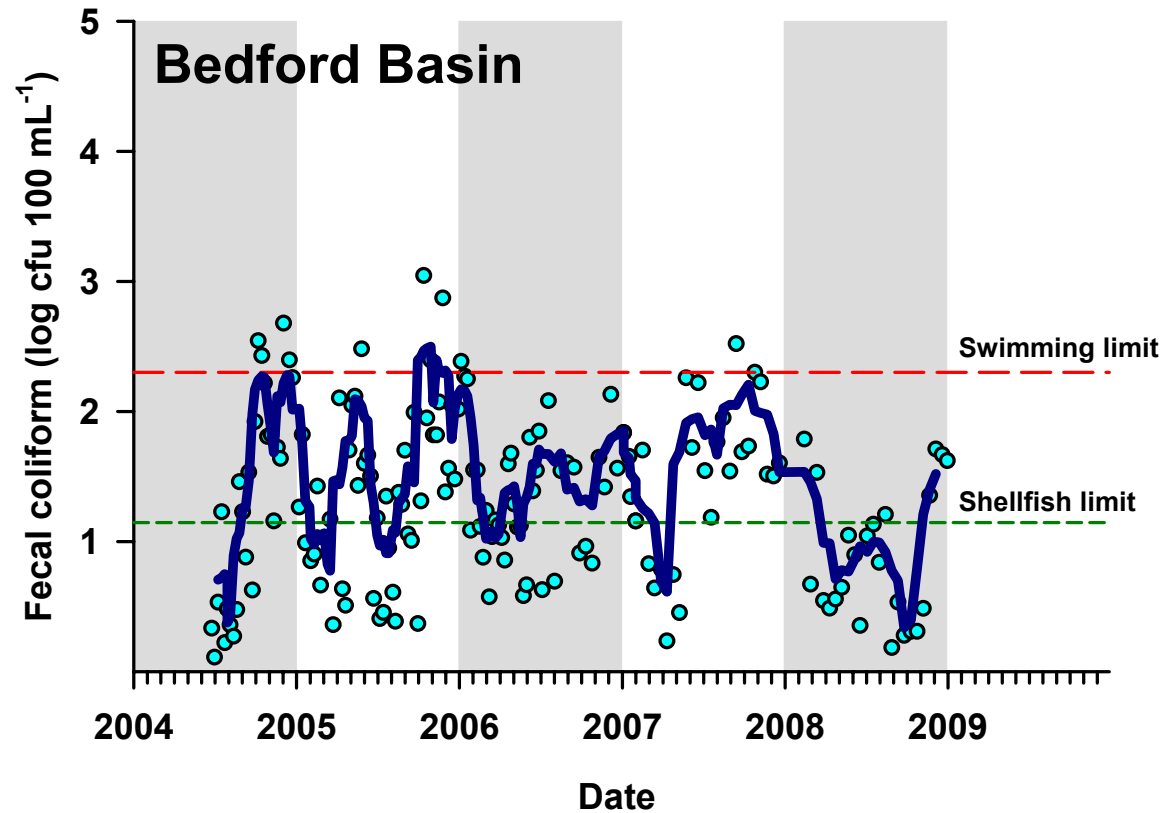
Northwest Arm : AYC (Armdale Yacht Club)



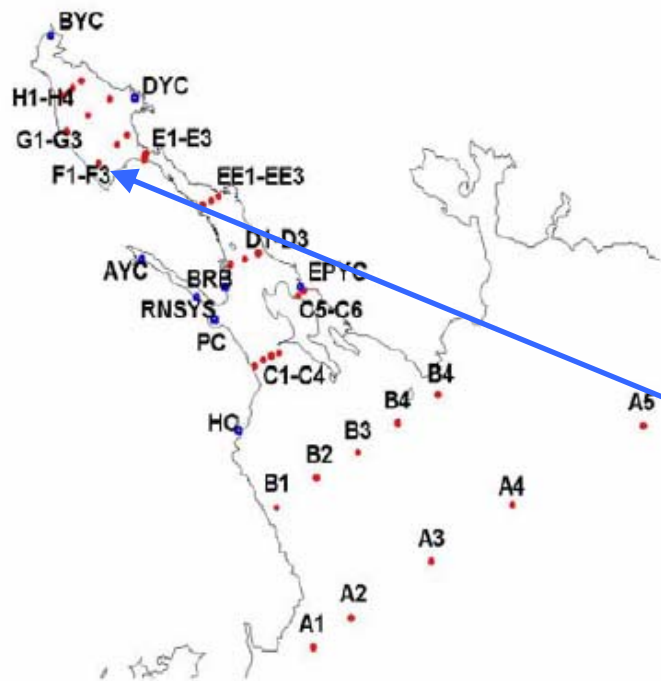
data source: *Halifax Harbour Water Quality Monitoring Program, Halifax Regional Municipality*
 data consultants: *AMEC Earth and Environmental for Stantec*
 data analysis: *Department of Fisheries and Oceans, Bedford Institute of Oceanography*



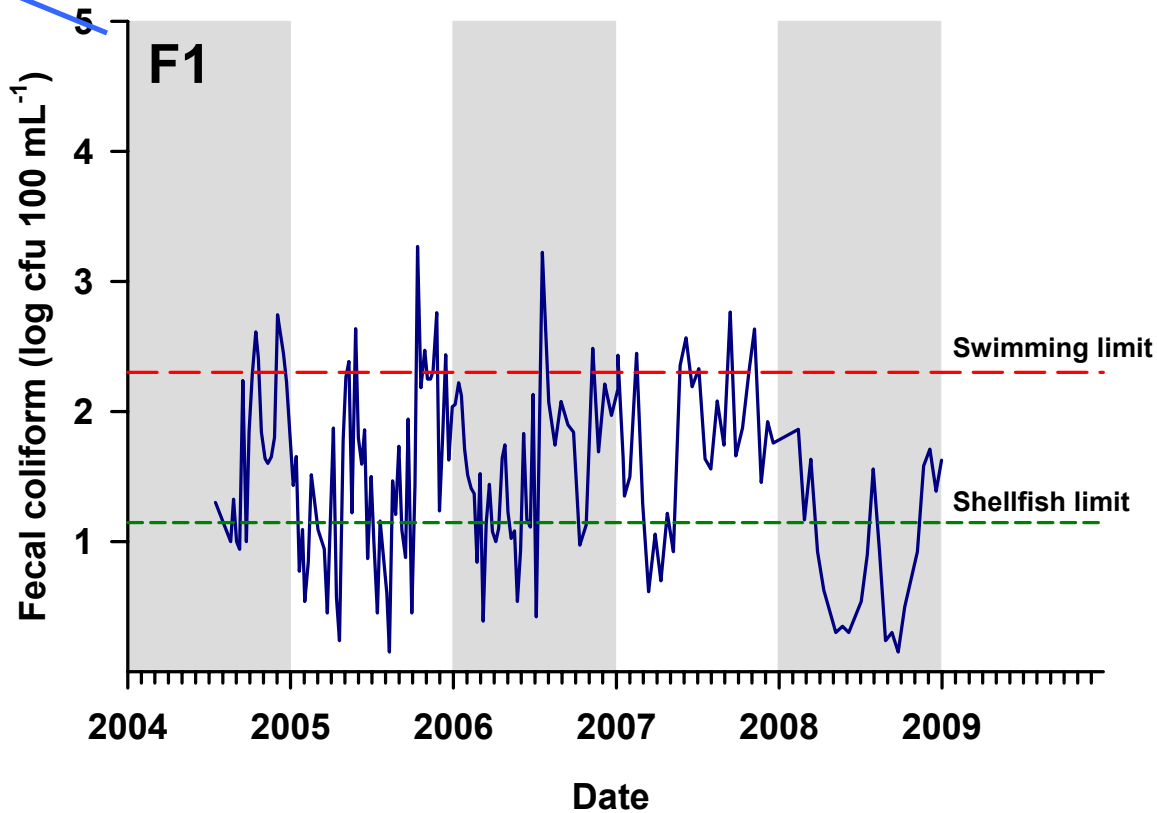
Bedford Basin : **F1, F2, F3, DYC, G2, H1, H2, H3, BYC**



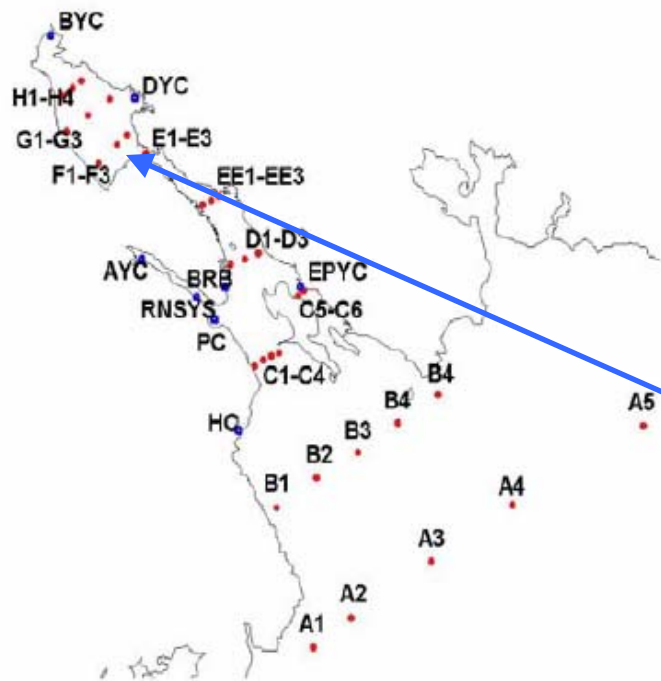
data source: *Halifax Harbour Water Quality Monitoring Program, Halifax Regional Municipality*
 data consultants: *AMEC Earth and Environmental for Stantec*
 data analysis: *Department of Fisheries and Oceans, Bedford Institute of Oceanography*



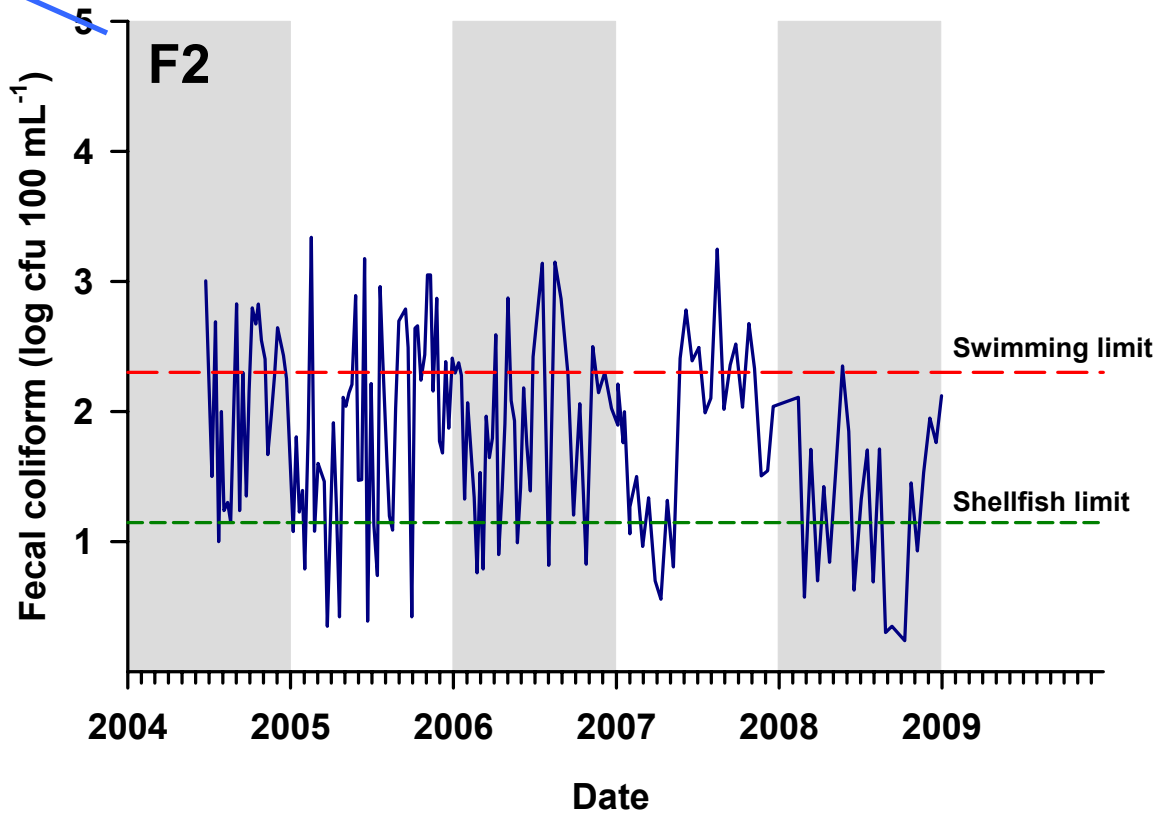
Bedford Basin : F1



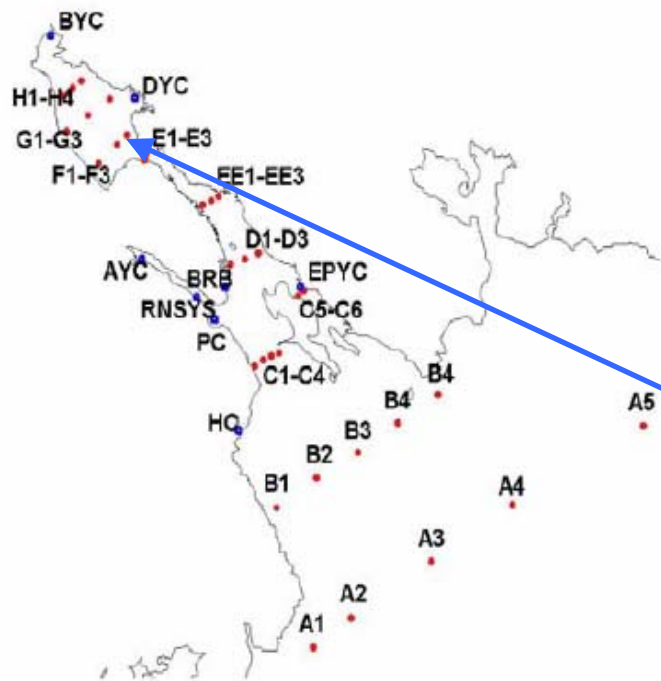
data source: *Halifax Harbour Water Quality Monitoring Program, Halifax Regional Municipality*
 data consultants: *AMEC Earth and Environmental for Stantec*
 data analysis: *Department of Fisheries and Oceans, Bedford Institute of Oceanography*



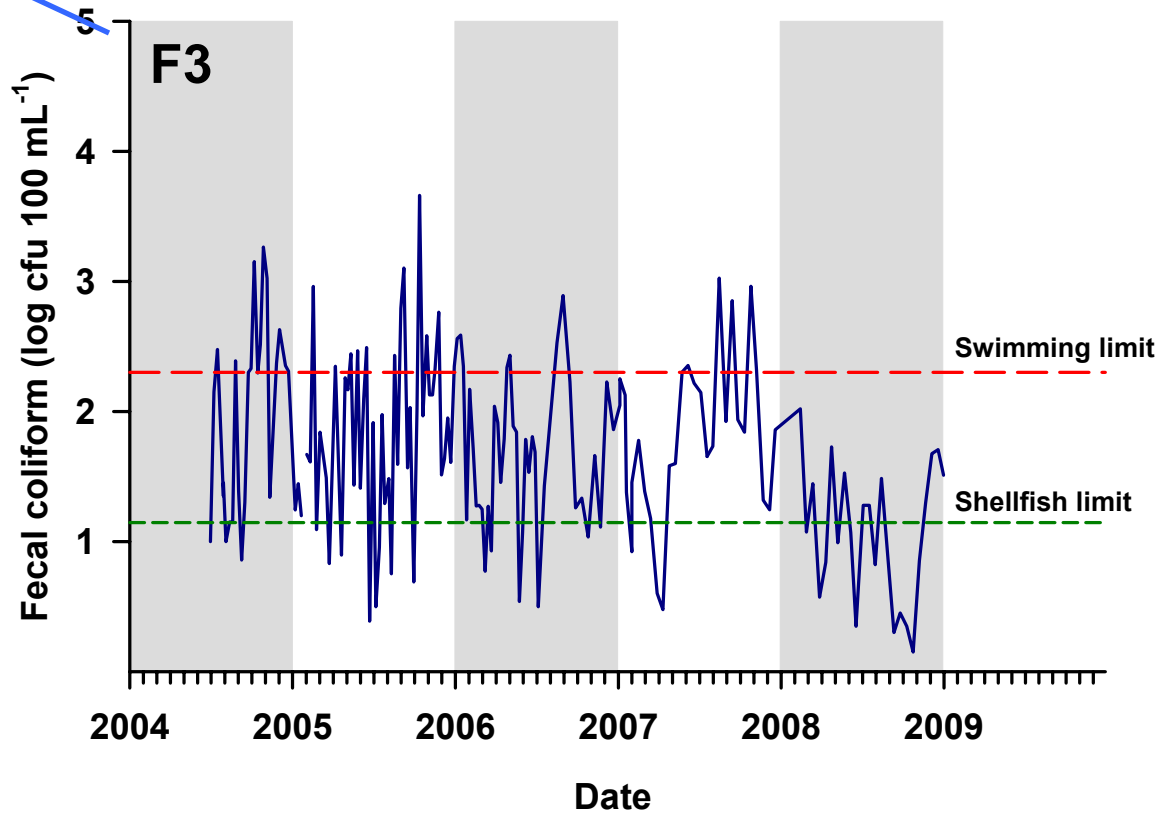
Bedford Basin : F2



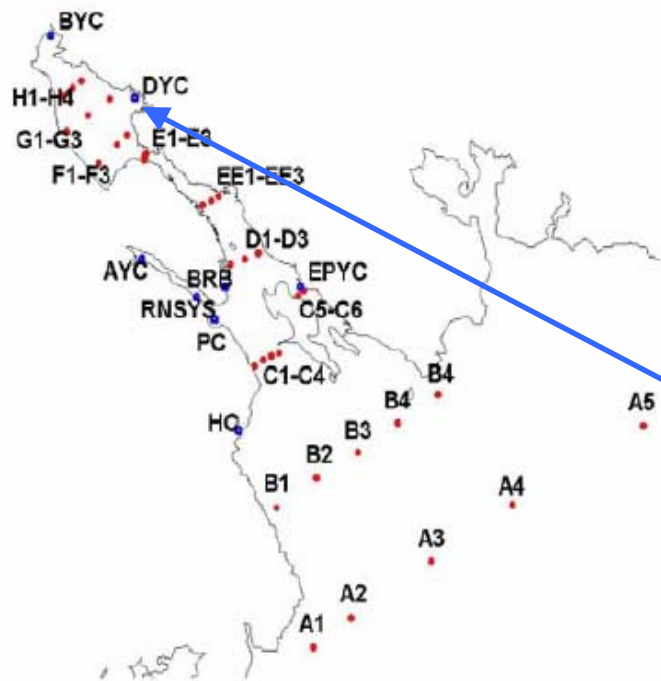
data source: *Halifax Harbour Water Quality Monitoring Program, Halifax Regional Municipality*
 data consultants: *AMEC Earth and Environmental for Stantec*
 data analysis: *Department of Fisheries and Oceans, Bedford Institute of Oceanography*



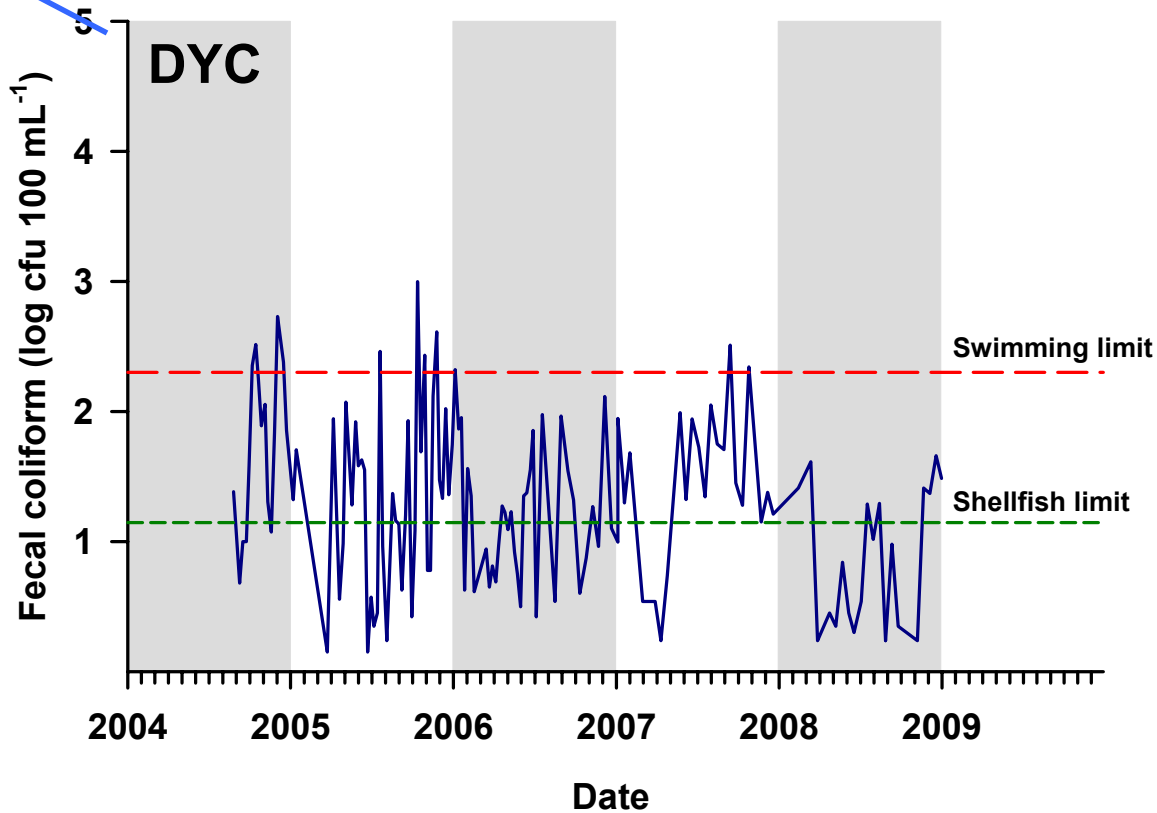
Bedford Basin : F3



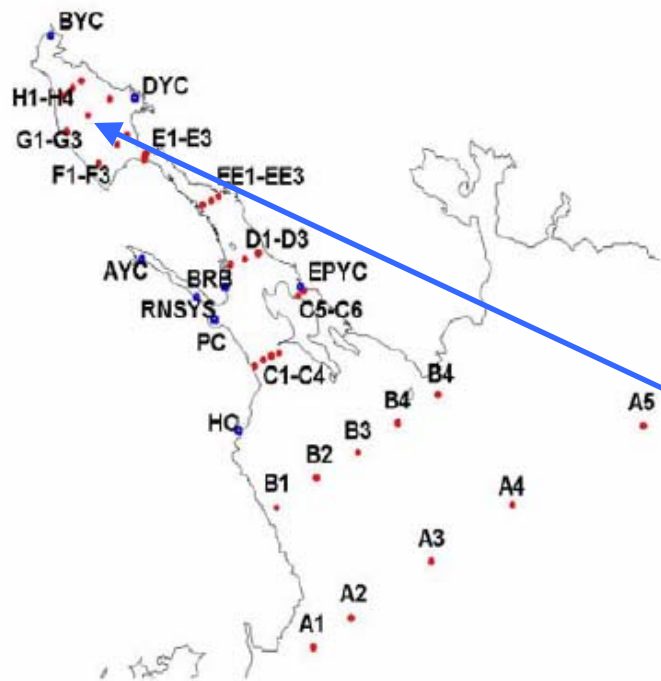
data source: *Halifax Harbour Water Quality Monitoring Program, Halifax Regional Municipality*
 data consultants: *AMEC Earth and Environmental for Stantec*
 data analysis: *Department of Fisheries and Oceans, Bedford Institute of Oceanography*



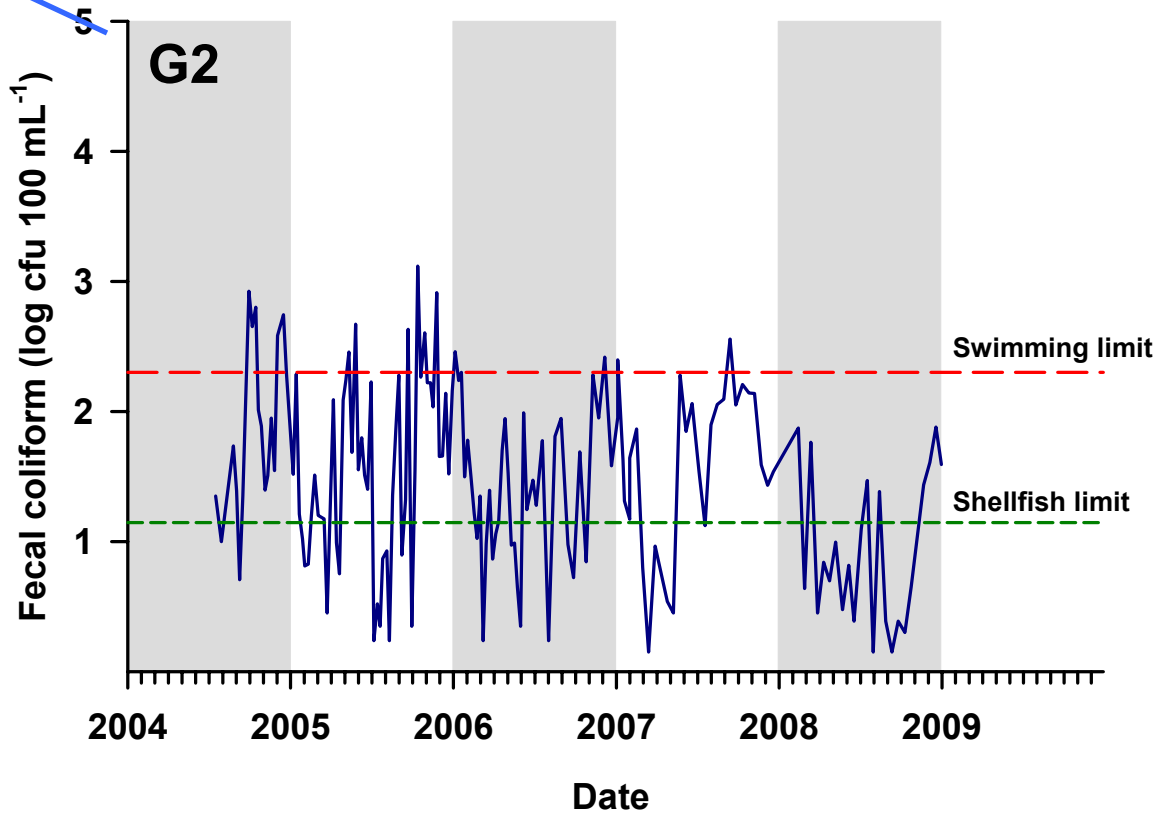
Bedford Basin : DYC (Dartmouth Yacht Club)



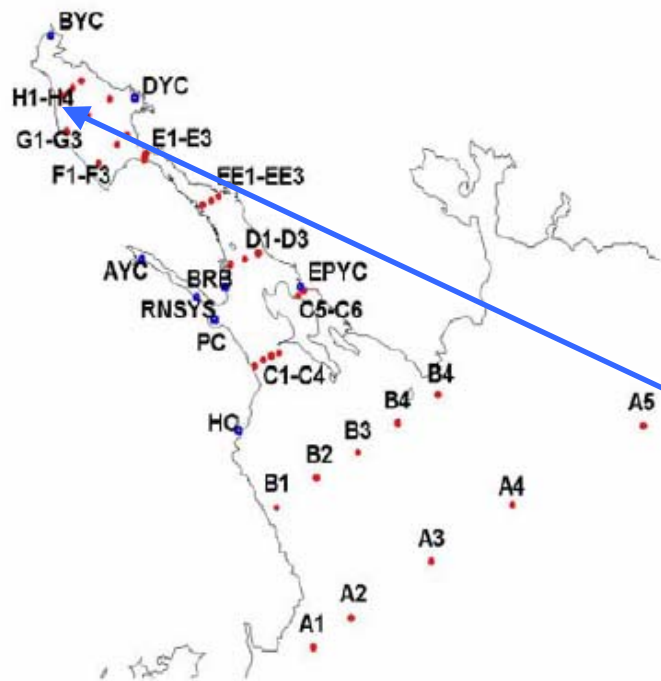
data source: *Halifax Harbour Water Quality Monitoring Program, Halifax Regional Municipality*
 data consultants: *AMEC Earth and Environmental for Stantec*
 data analysis: *Department of Fisheries and Oceans, Bedford Institute of Oceanography*



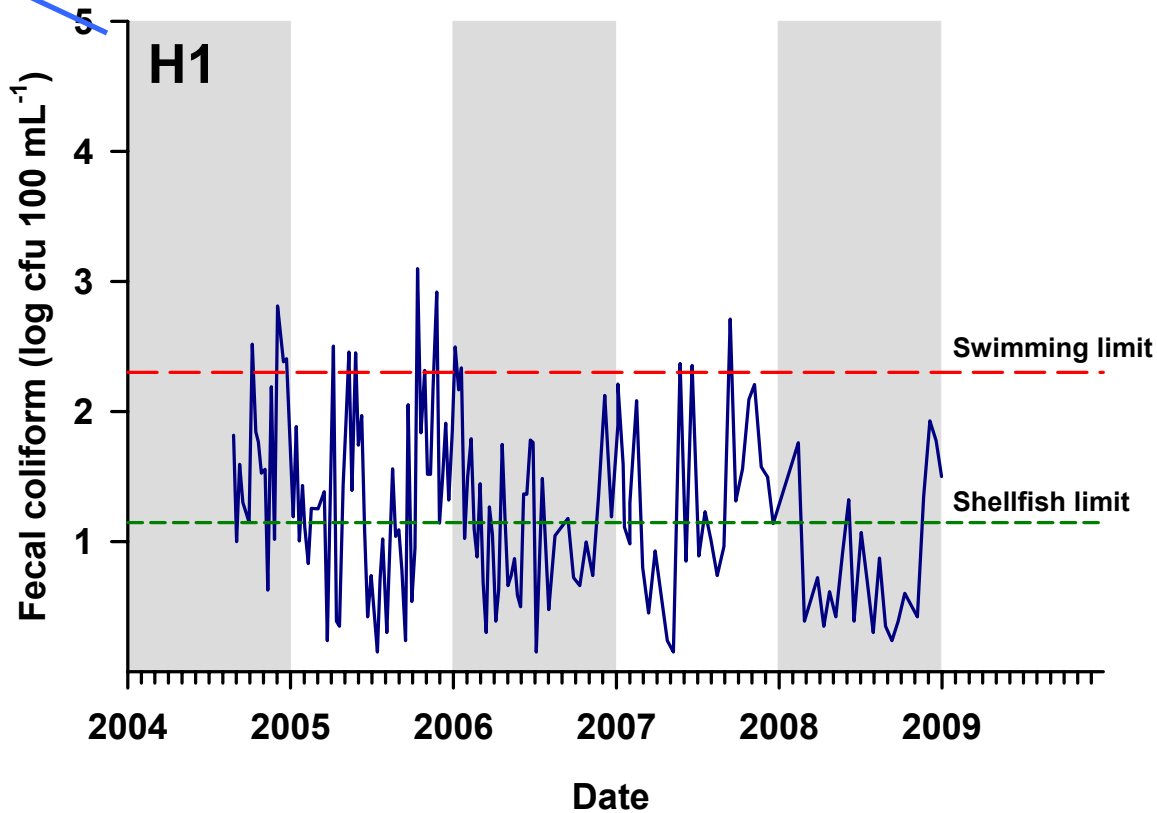
Bedford Basin : G2 (Compass Buoy)



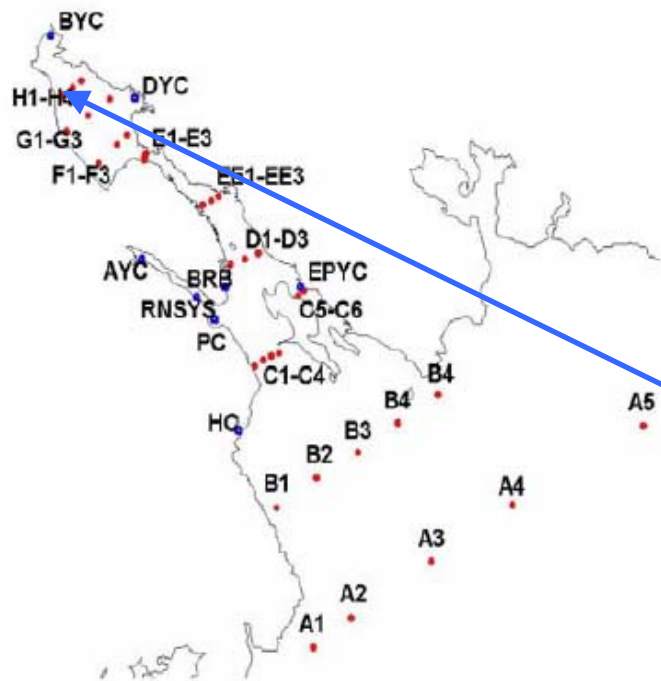
data source: *Halifax Harbour Water Quality Monitoring Program, Halifax Regional Municipality*
 data consultants: *AMEC Earth and Environmental for Stantec*
 data analysis: *Department of Fisheries and Oceans, Bedford Institute of Oceanography*



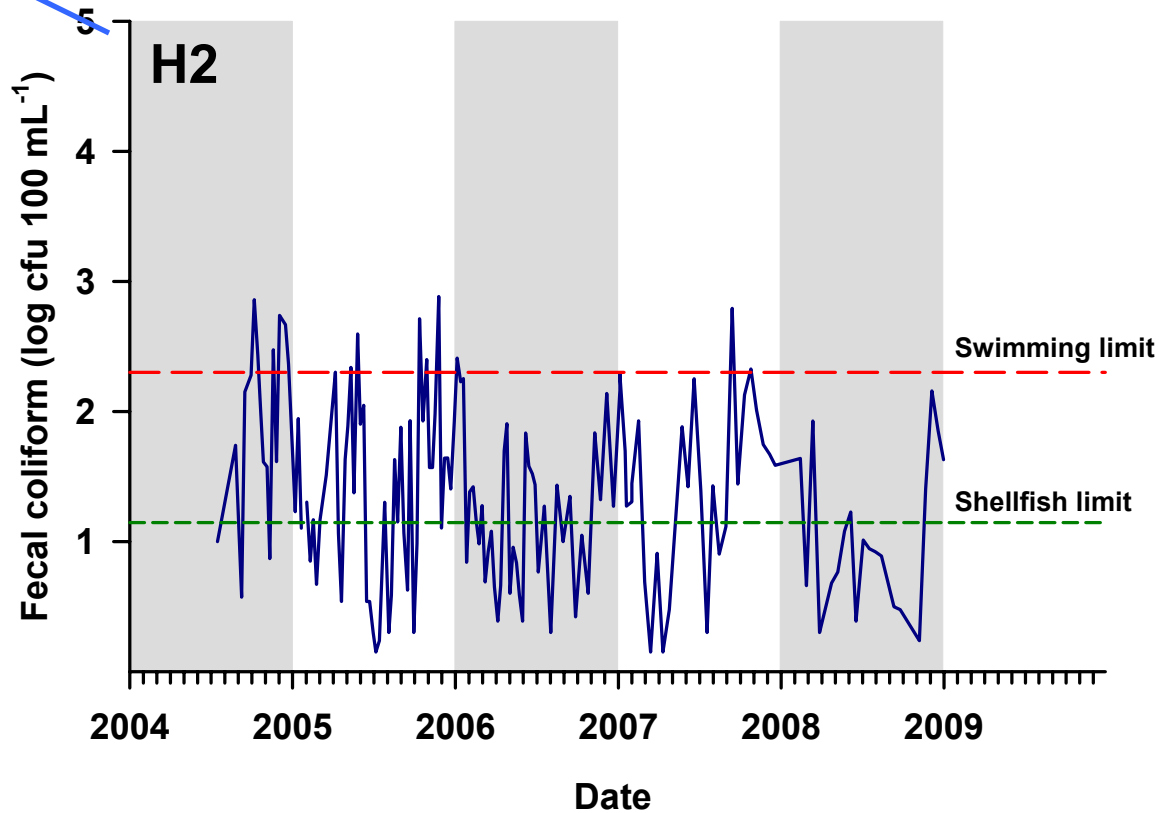
Bedford Basin : H1



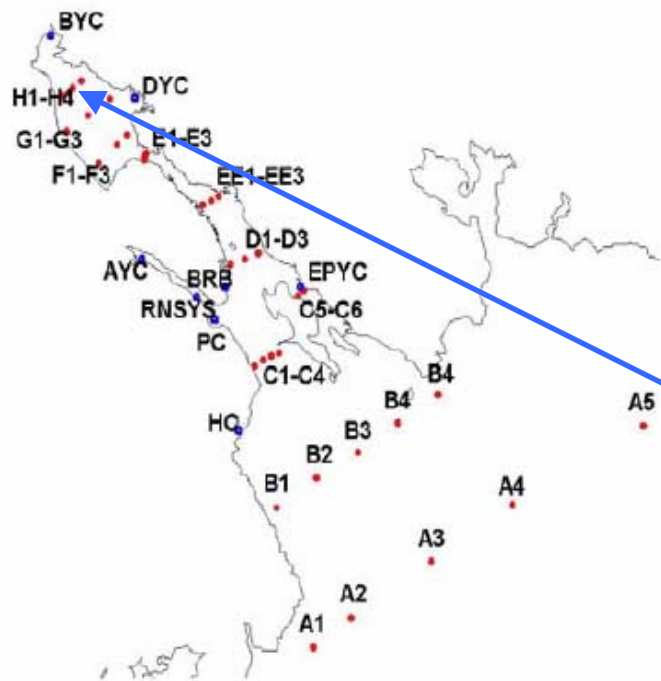
data source: *Halifax Harbour Water Quality Monitoring Program, Halifax Regional Municipality*
 data consultants: *AMEC Earth and Environmental for Stantec*
 data analysis: *Department of Fisheries and Oceans, Bedford Institute of Oceanography*



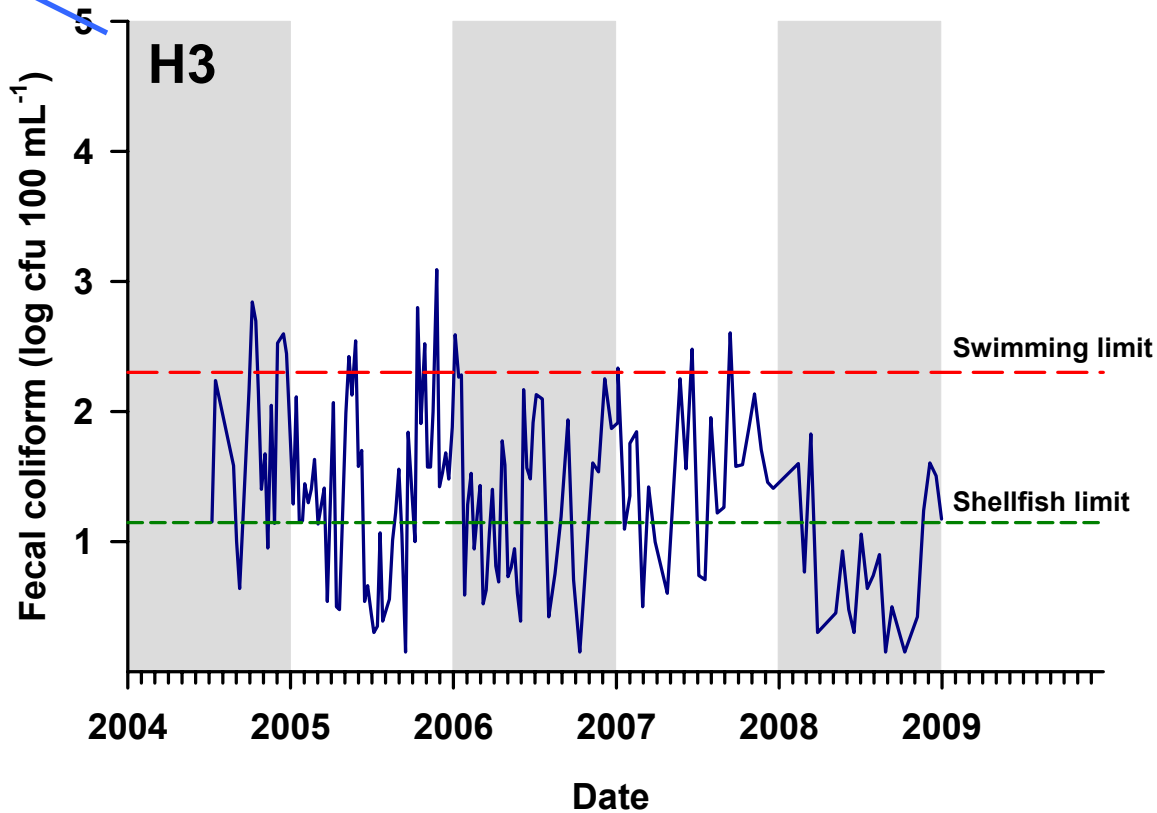
Bedford Basin : H2



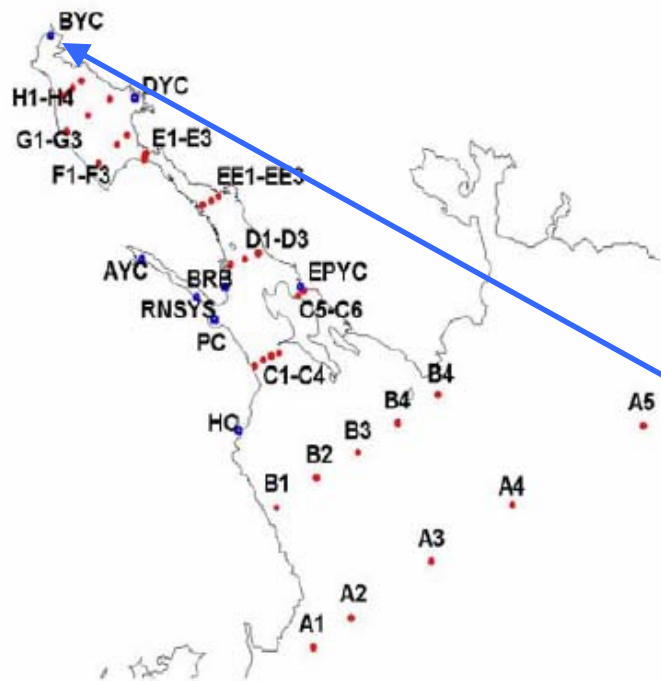
data source: *Halifax Harbour Water Quality Monitoring Program, Halifax Regional Municipality*
 data consultants: *AMEC Earth and Environmental for Stantec*
 data analysis: *Department of Fisheries and Oceans, Bedford Institute of Oceanography*



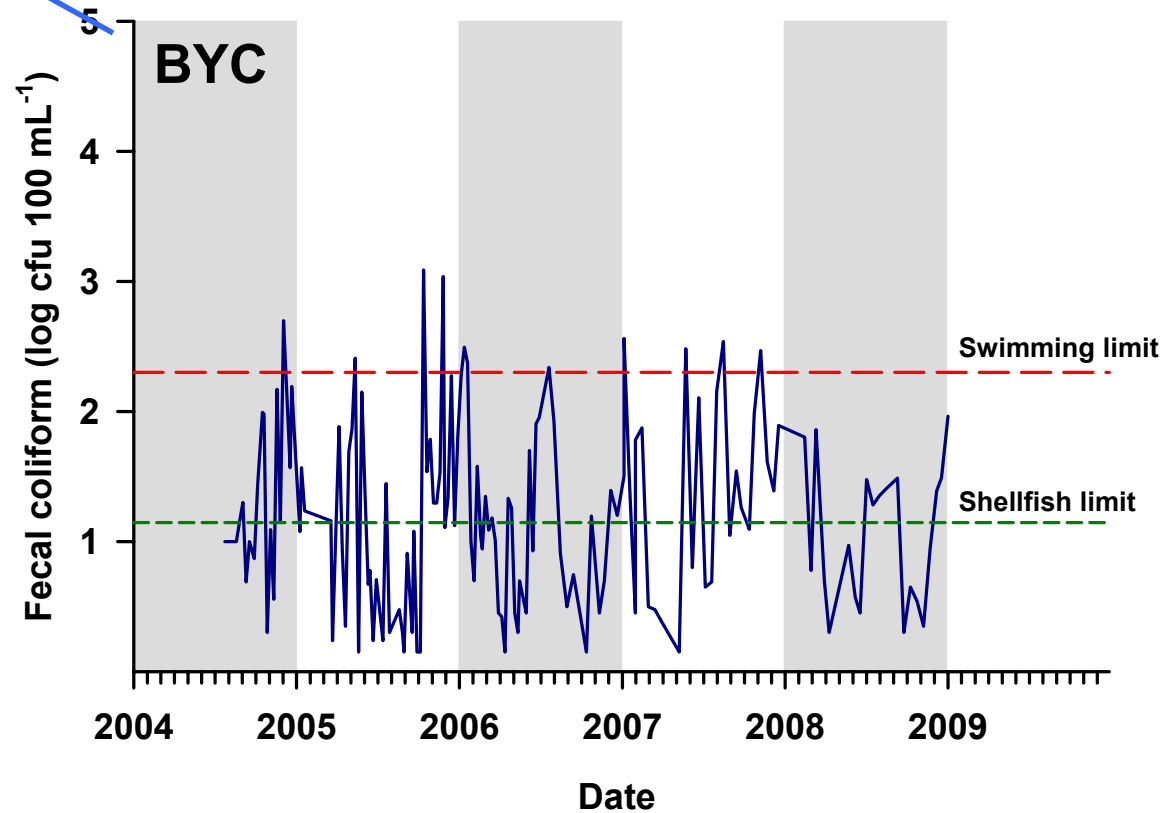
Bedford Basin : H3



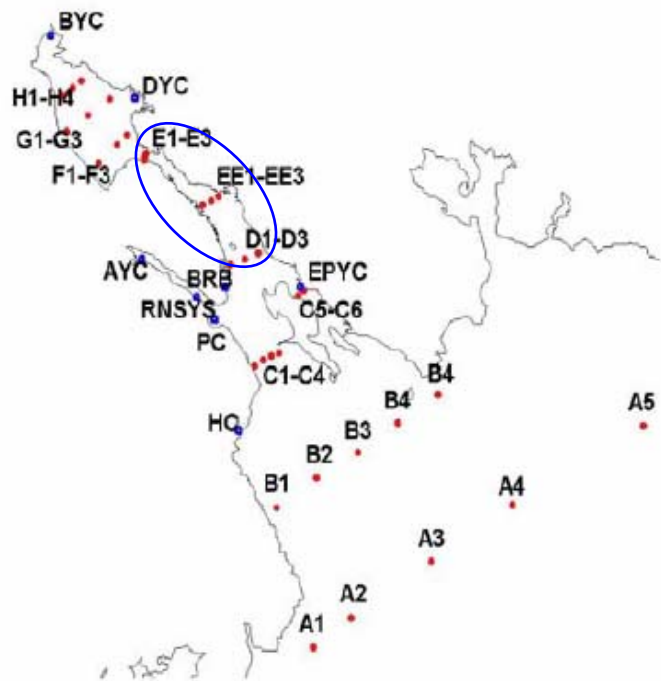
data source: *Halifax Harbour Water Quality Monitoring Program, Halifax Regional Municipality*
 data consultants: *AMEC Earth and Environmental for Stantec*
 data analysis: *Department of Fisheries and Oceans, Bedford Institute of Oceanography*



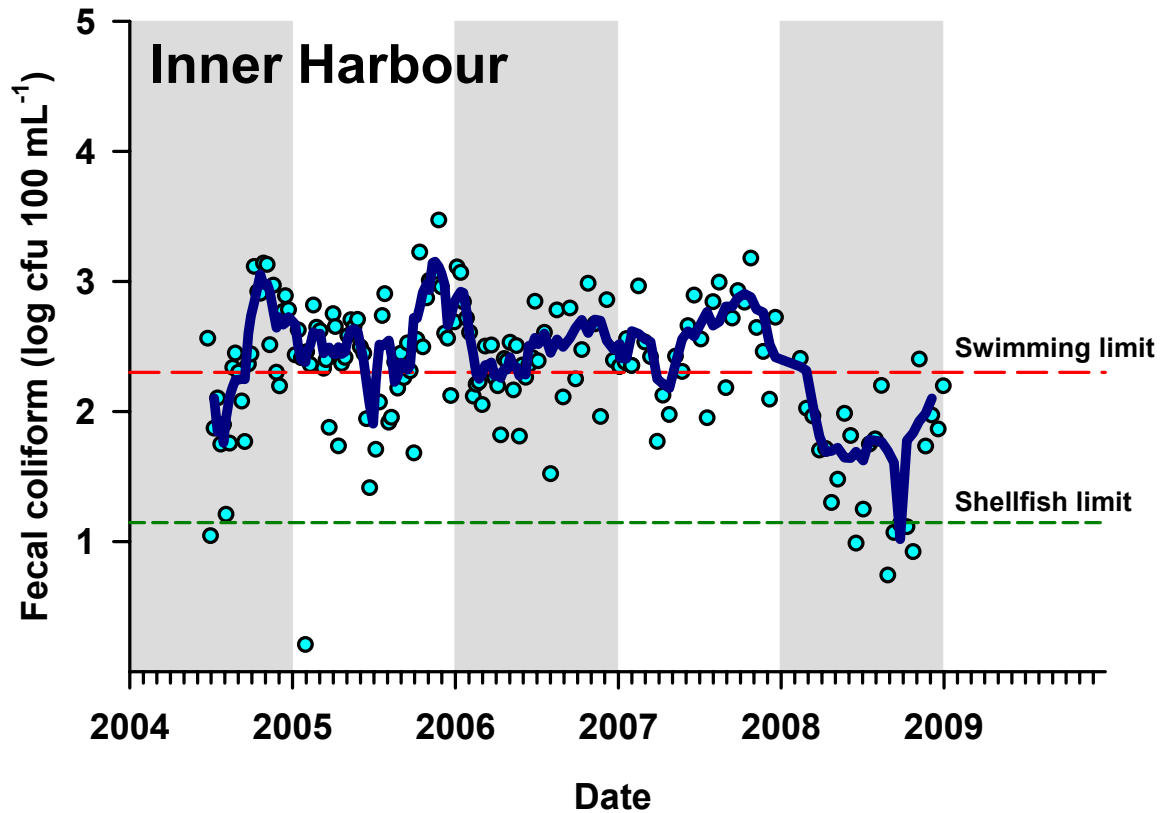
Bedford Basin : BYC (Bedford Yacht Club)



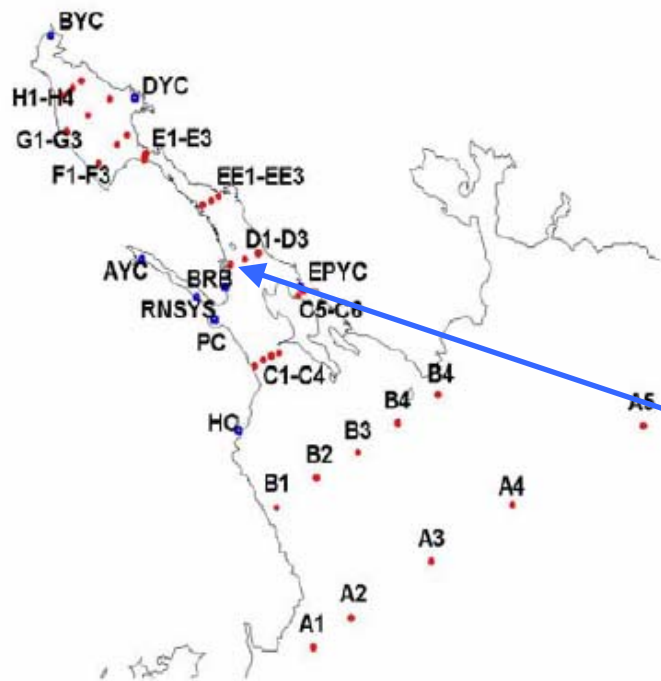
data source: *Halifax Harbour Water Quality Monitoring Program, Halifax Regional Municipality*
 data consultants: *AMEC Earth and Environmental for Stantec*
 data analysis: *Department of Fisheries and Oceans, Bedford Institute of Oceanography*



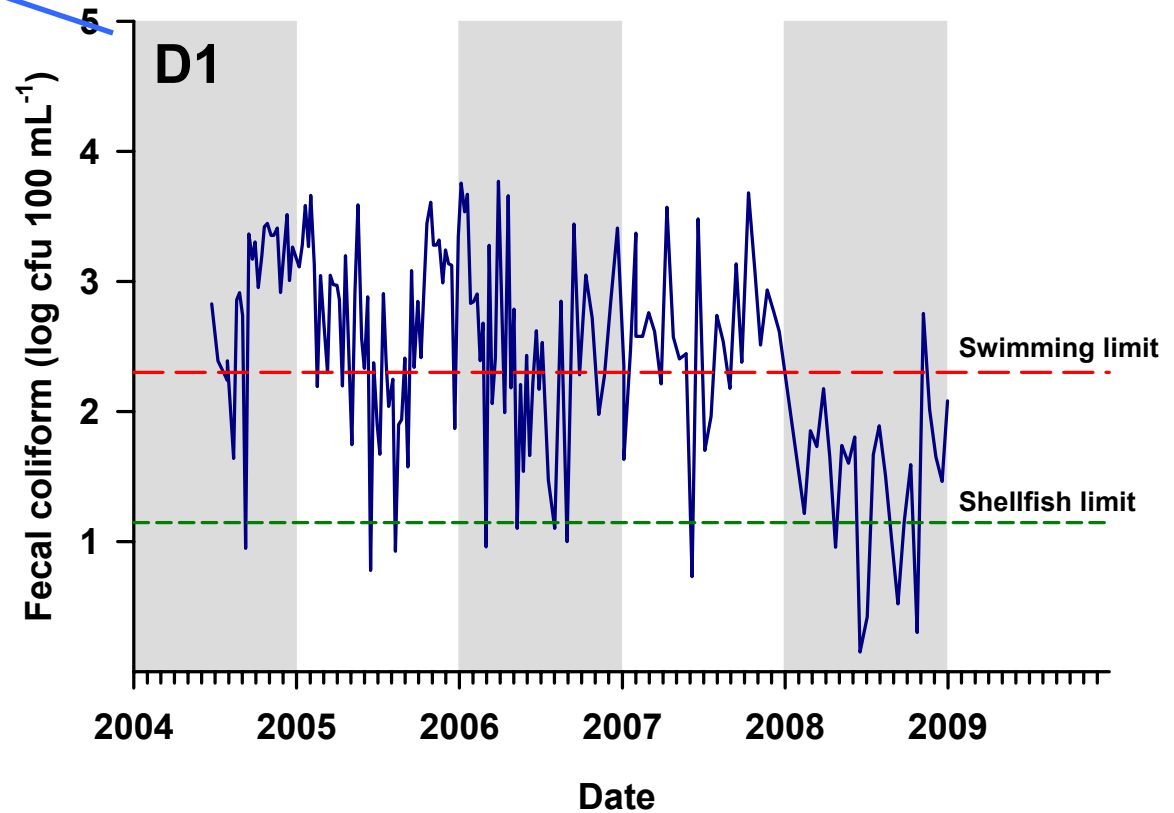
Inner Harbour : D1, D2, D3, E1, E2, E3, EE1, EE2, EE3



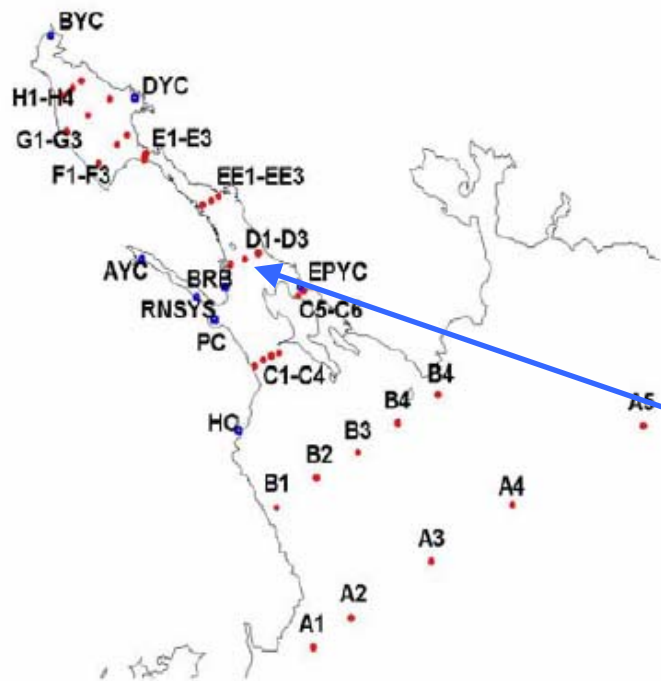
data source: *Halifax Harbour Water Quality Monitoring Program, Halifax Regional Municipality*
 data consultants: *AMEC Earth and Environmental for Stantec*
 data analysis: *Department of Fisheries and Oceans, Bedford Institute of Oceanography*



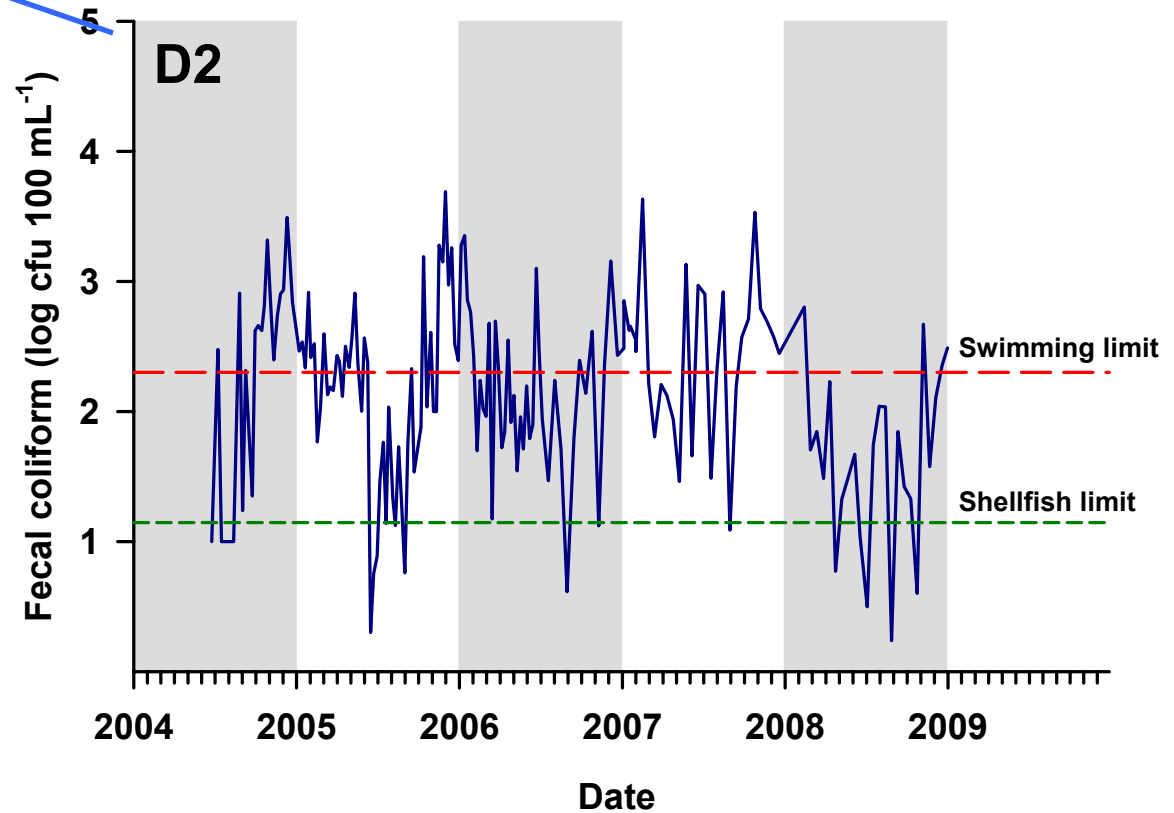
Inner Harbour : D1



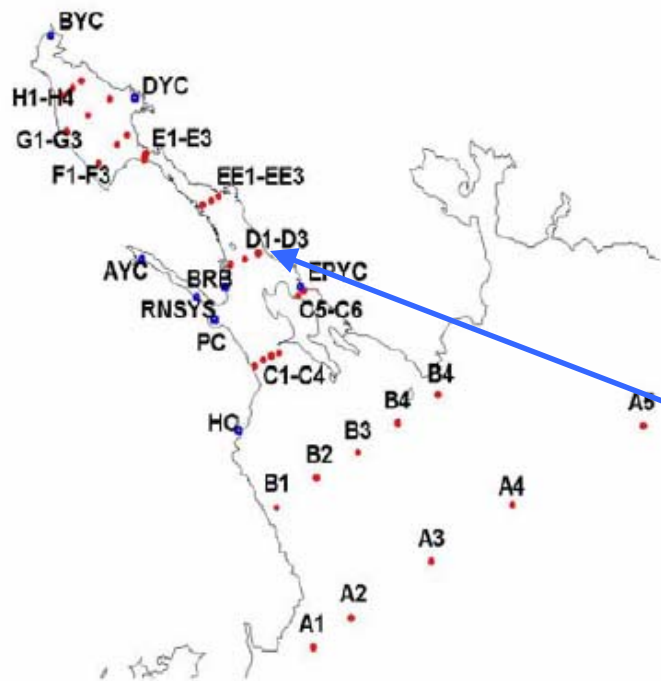
data source: *Halifax Harbour Water Quality Monitoring Program, Halifax Regional Municipality*
 data consultants: *AMEC Earth and Environmental for Stantec*
 data analysis: *Department of Fisheries and Oceans, Bedford Institute of Oceanography*



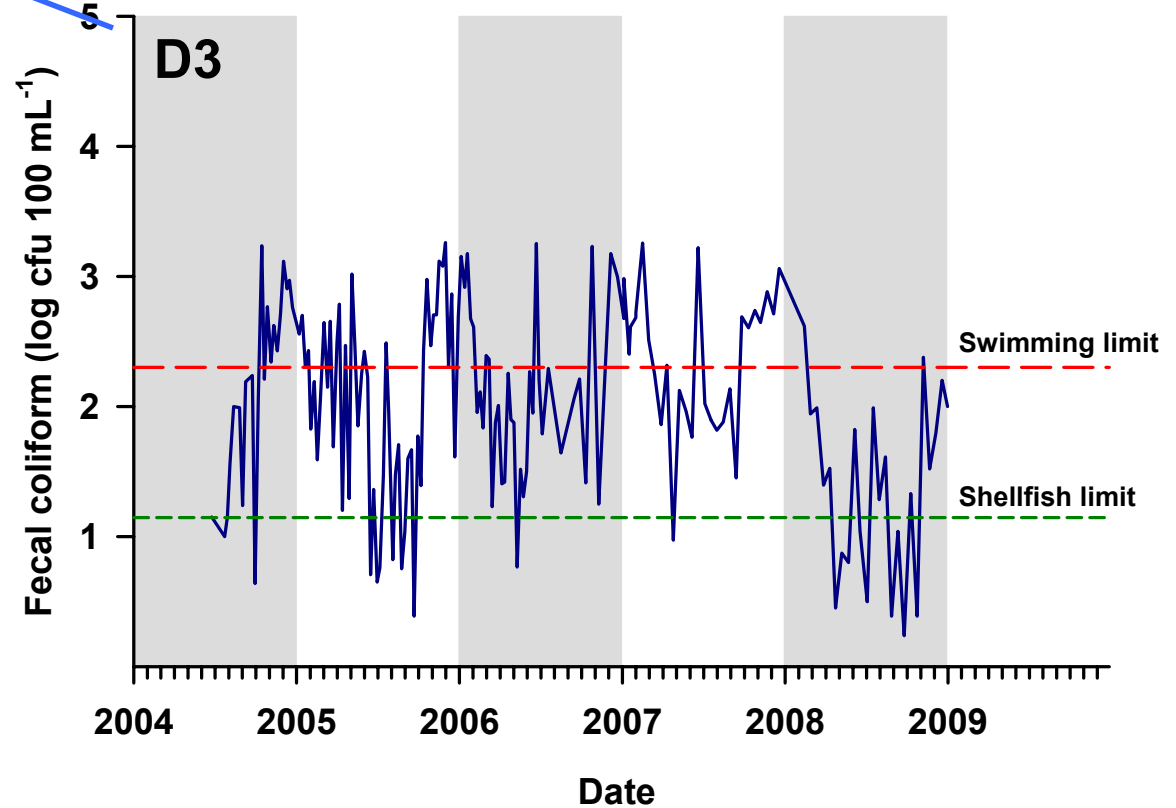
Inner Harbour : D2



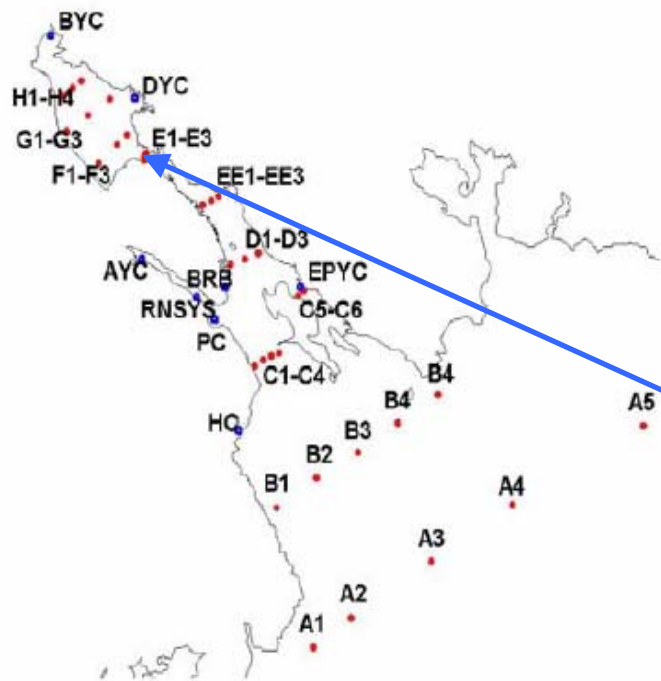
data source: *Halifax Harbour Water Quality Monitoring Program, Halifax Regional Municipality*
 data consultants: *AMEC Earth and Environmental for Stantec*
 data analysis: *Department of Fisheries and Oceans, Bedford Institute of Oceanography*



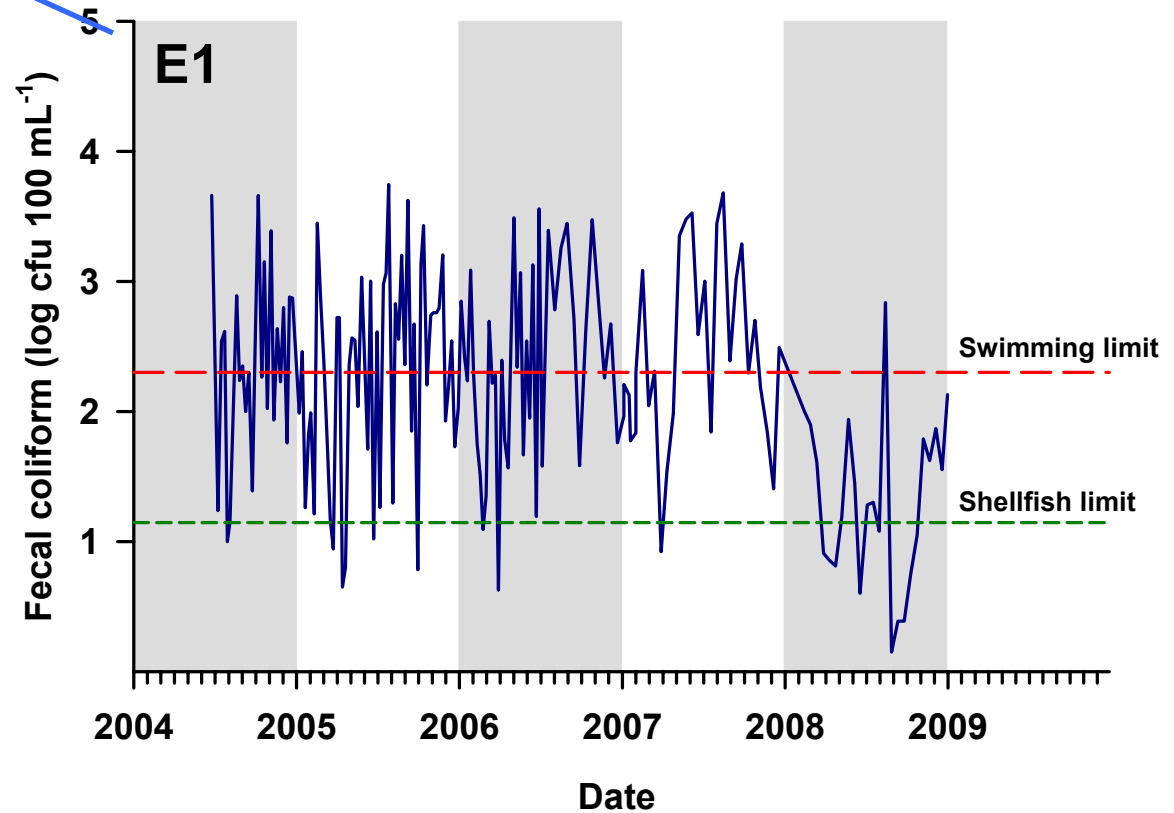
Inner Harbour : D3



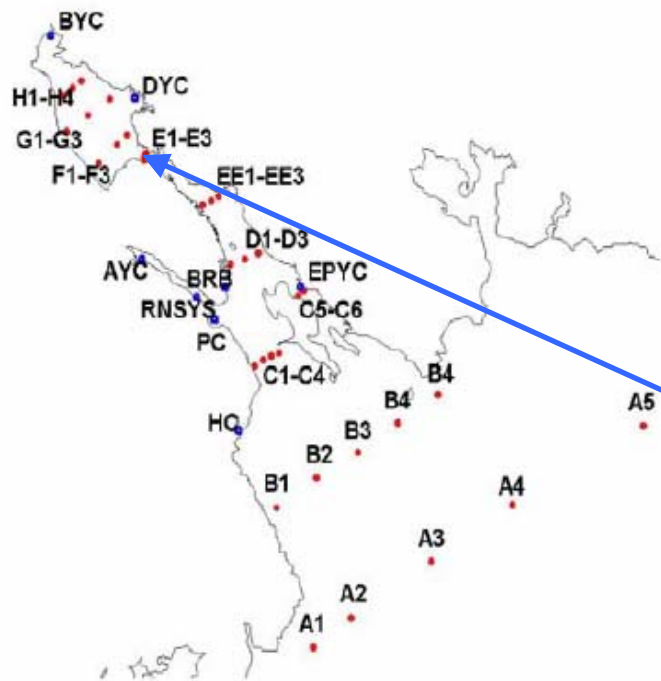
data source: *Halifax Harbour Water Quality Monitoring Program, Halifax Regional Municipality*
 data consultants: *AMEC Earth and Environmental for Stantec*
 data analysis: *Department of Fisheries and Oceans, Bedford Institute of Oceanography*



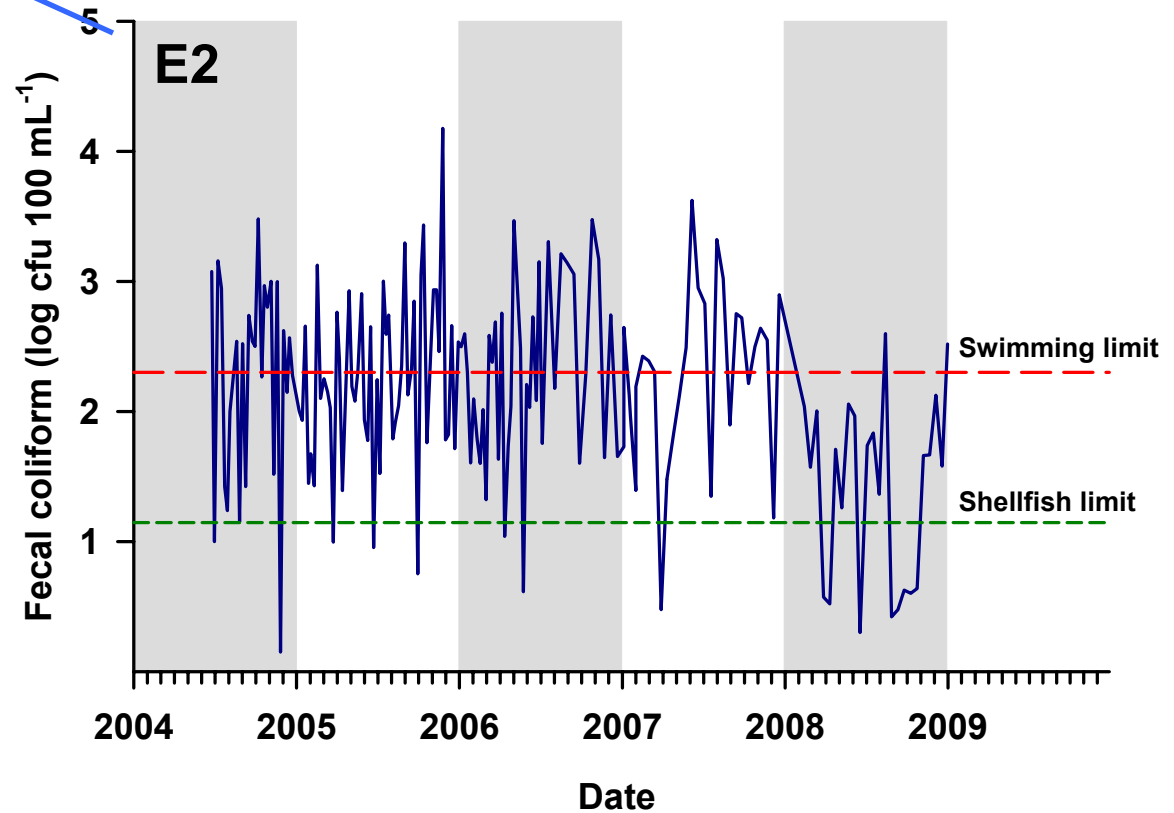
Inner Harbour : E1



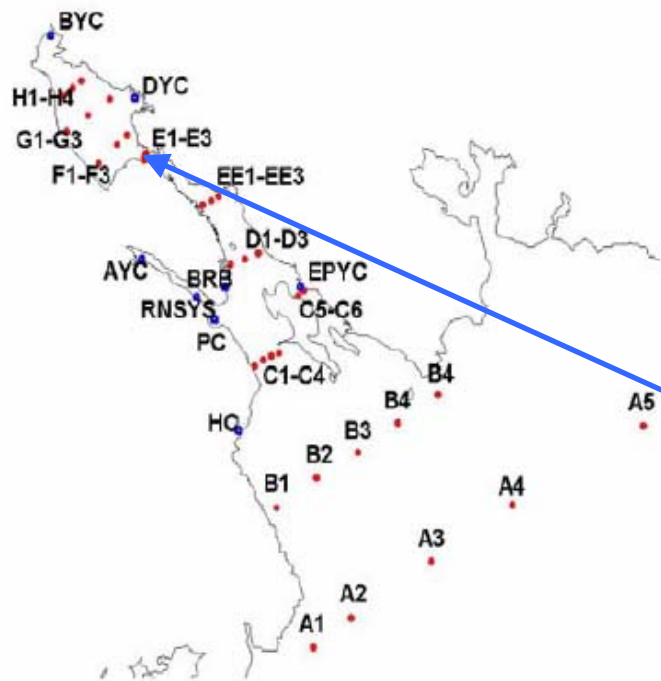
data source: *Halifax Harbour Water Quality Monitoring Program, Halifax Regional Municipality*
 data consultants: *AMEC Earth and Environmental for Stantec*
 data analysis: *Department of Fisheries and Oceans, Bedford Institute of Oceanography*



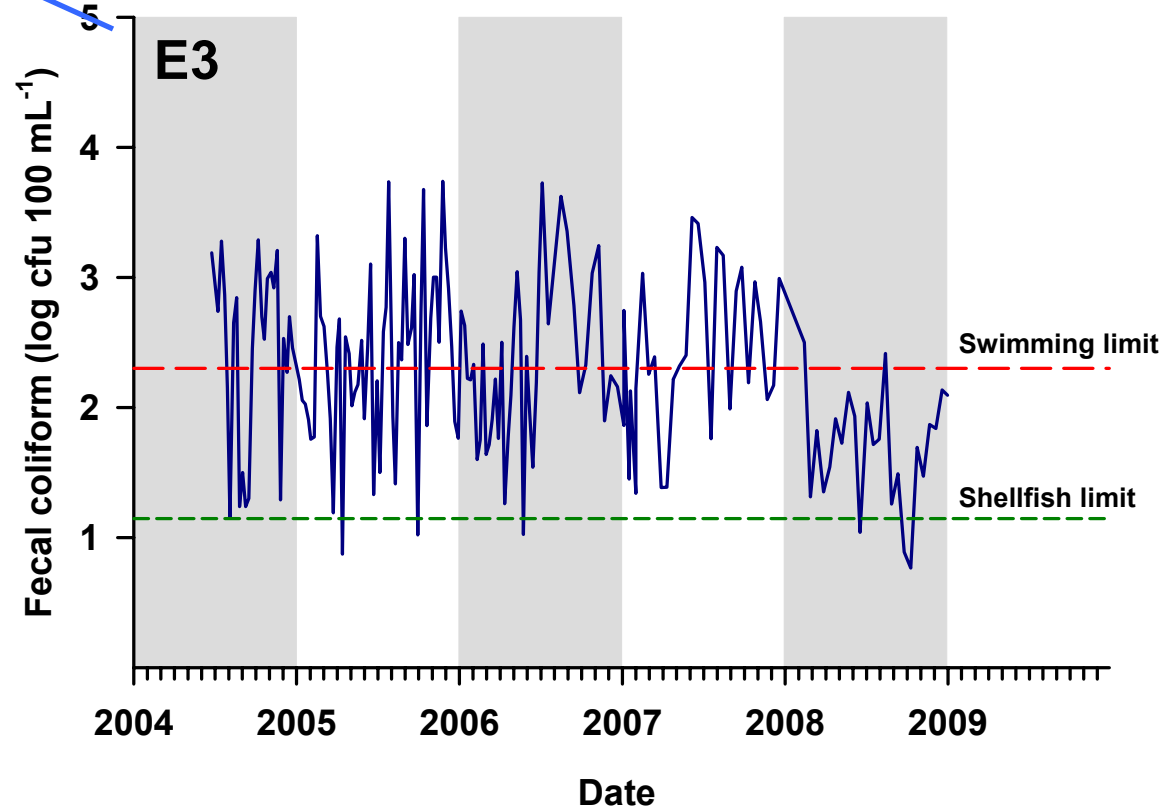
Inner Harbour : E2



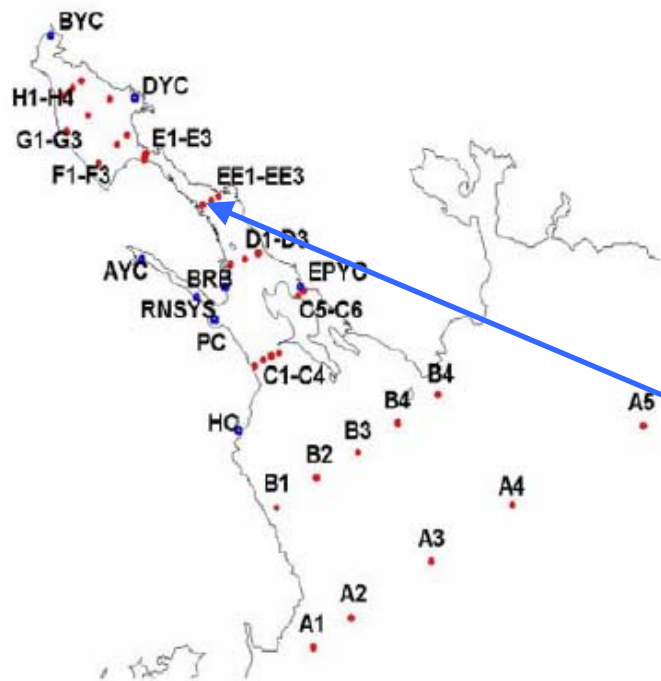
data source: *Halifax Harbour Water Quality Monitoring Program, Halifax Regional Municipality*
 data consultants: *AMEC Earth and Environmental for Stantec*
 data analysis: *Department of Fisheries and Oceans, Bedford Institute of Oceanography*



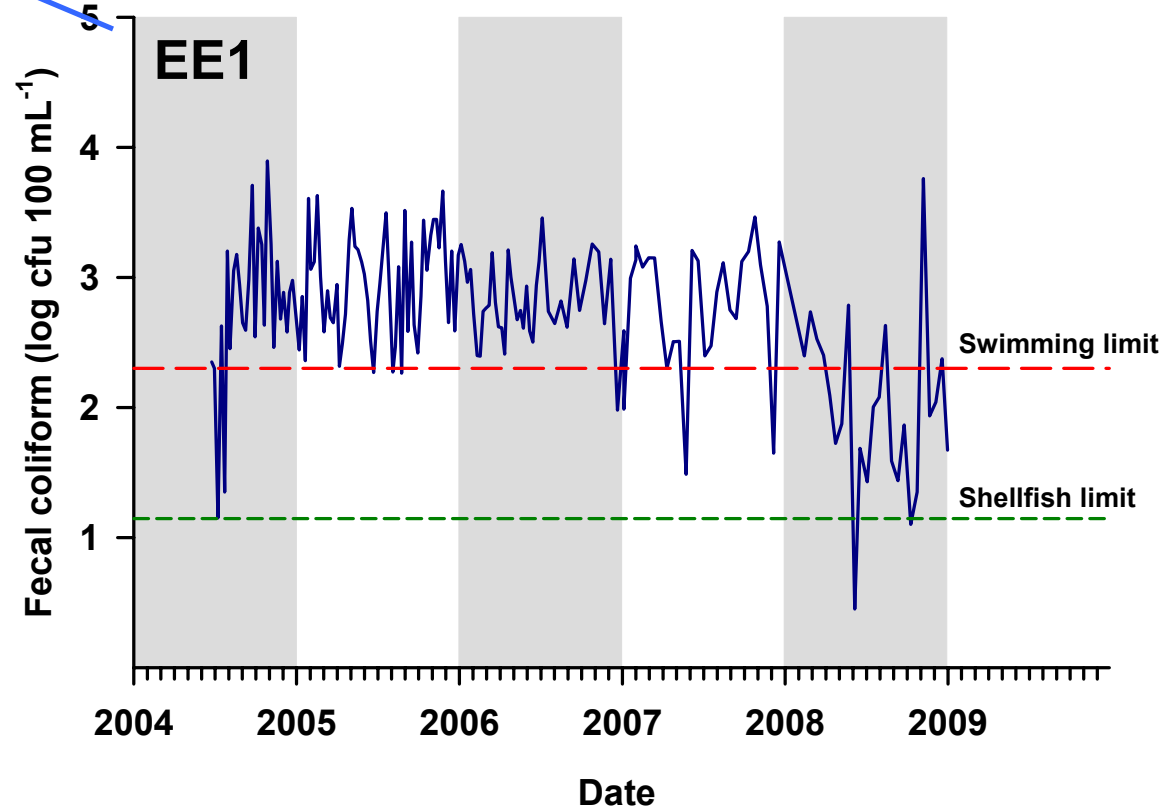
Inner Harbour : E3



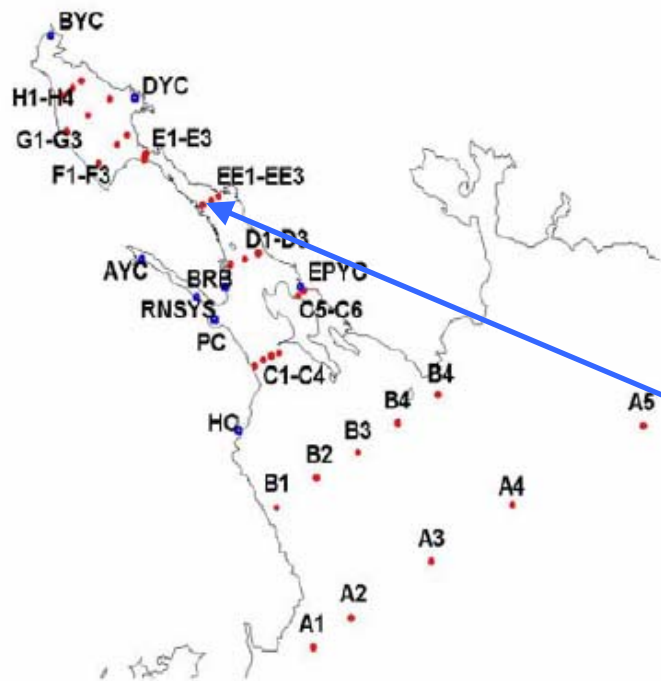
data source: *Halifax Harbour Water Quality Monitoring Program, Halifax Regional Municipality*
 data consultants: *AMEC Earth and Environmental for Stantec*
 data analysis: *Department of Fisheries and Oceans, Bedford Institute of Oceanography*



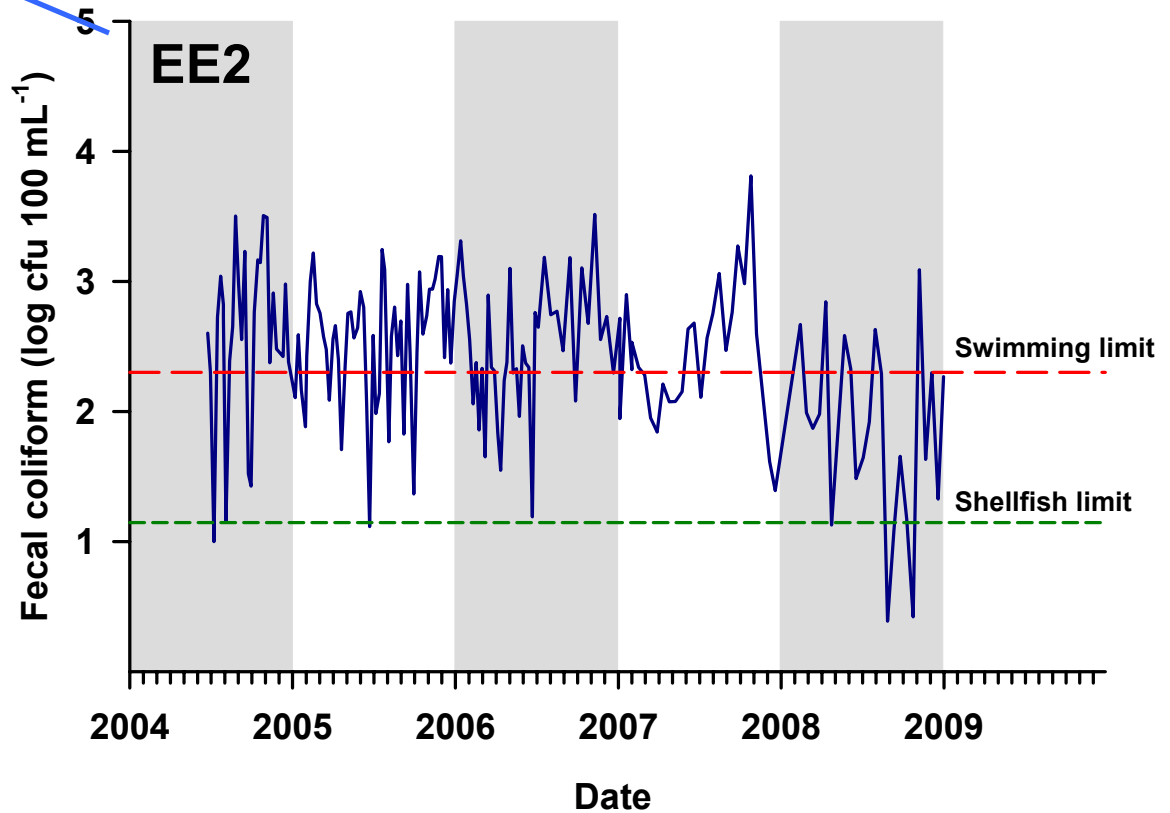
Inner Harbour : EE1



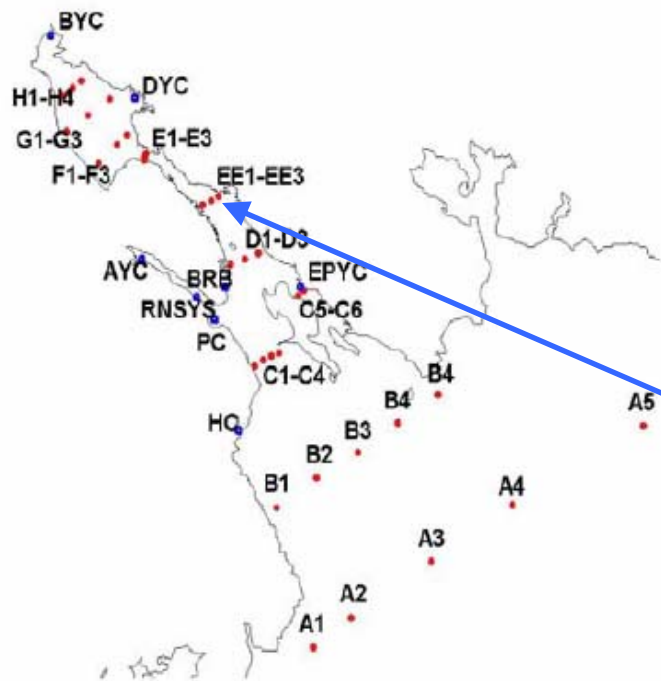
data source: *Halifax Harbour Water Quality Monitoring Program, Halifax Regional Municipality*
 data consultants: *AMEC Earth and Environmental for Stantec*
 data analysis: *Department of Fisheries and Oceans, Bedford Institute of Oceanography*



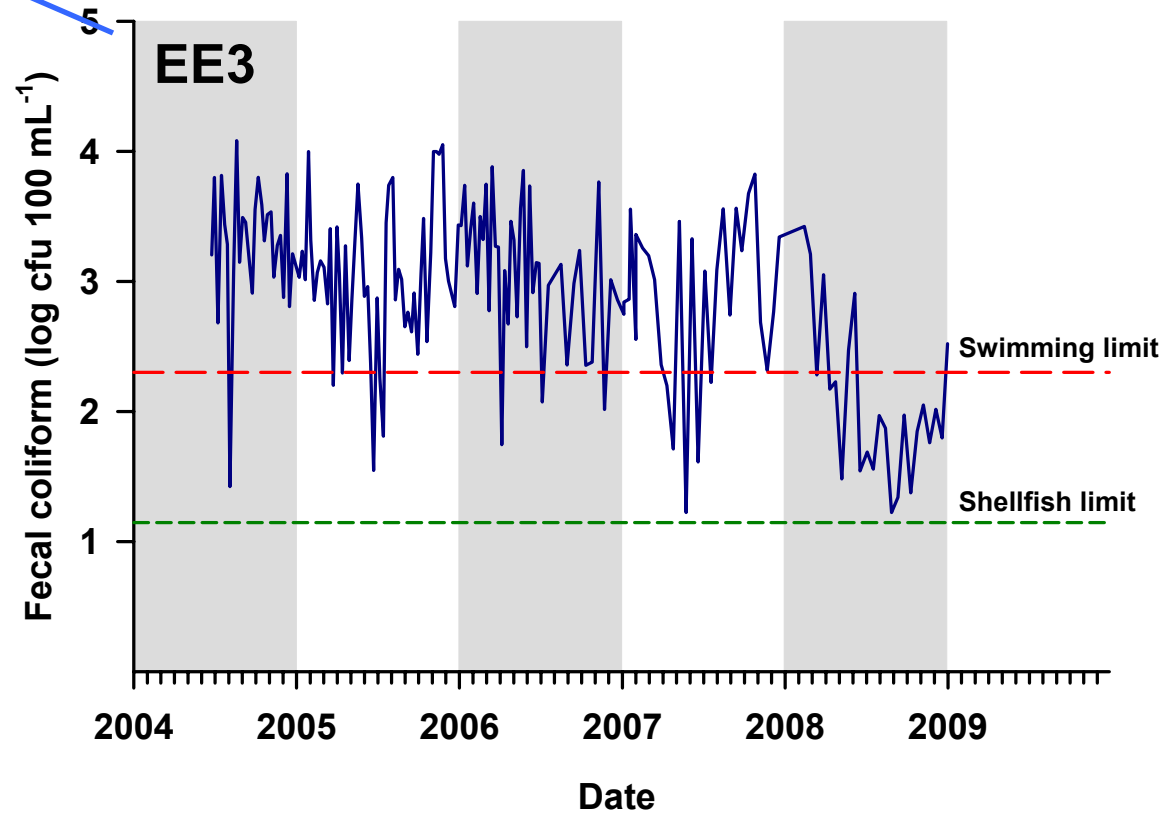
Inner Harbour : EE2



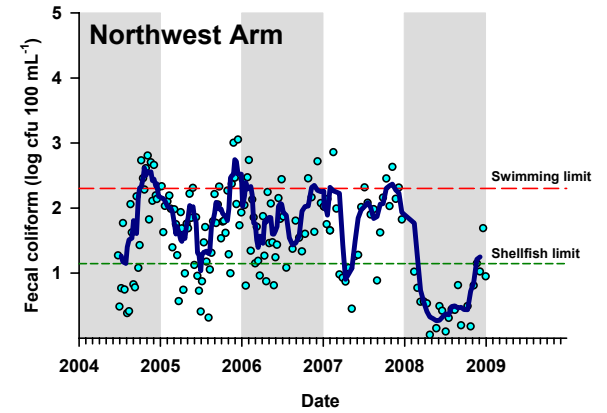
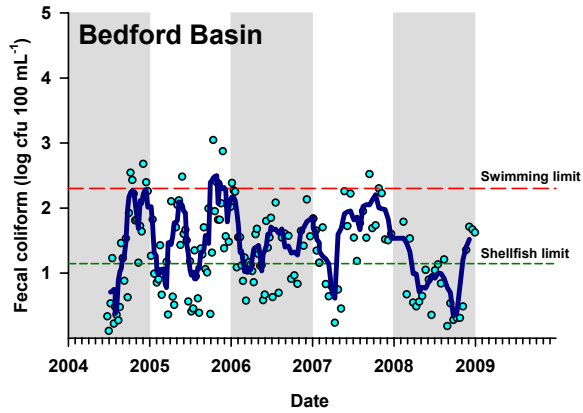
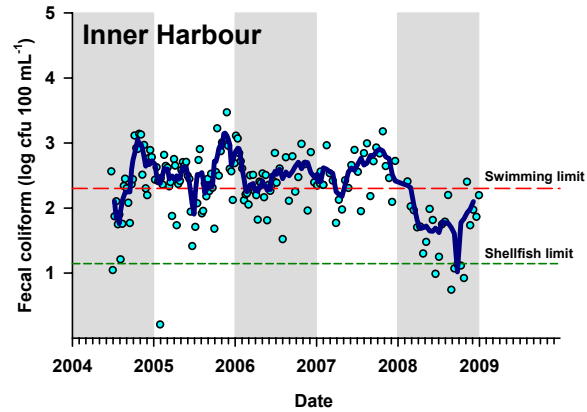
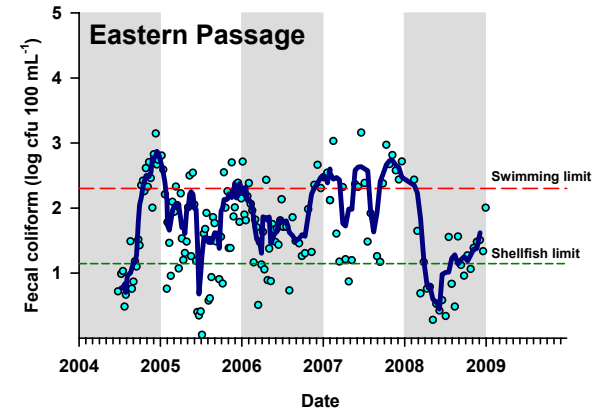
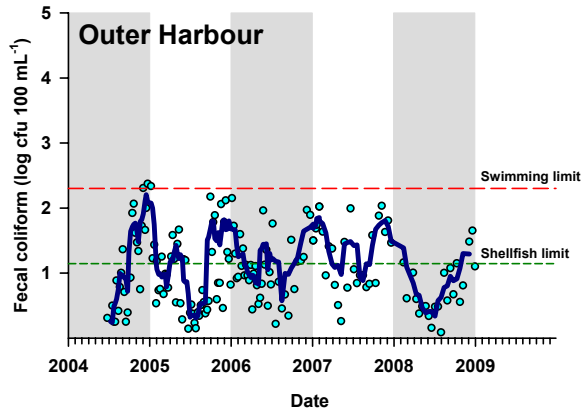
data source: *Halifax Harbour Water Quality Monitoring Program, Halifax Regional Municipality*
 data consultants: *AMEC Earth and Environmental for Stantec*
 data analysis: *Department of Fisheries and Oceans, Bedford Institute of Oceanography*



Inner Harbour : EE3



data source: *Halifax Harbour Water Quality Monitoring Program, Halifax Regional Municipality*
 data consultants: *AMEC Earth and Environmental for Stantec*
 data analysis: *Department of Fisheries and Oceans, Bedford Institute of Oceanography*



data source: *Halifax Harbour Water Quality Monitoring Program, Halifax Regional Municipality*
 data consultants: *AMEC Earth and Environmental for Stantec*
 data analysis: *Department of Fisheries and Oceans, Bedford Institute of Oceanography*